



High Legh Community Association

THE VILLAGE HALL . WEST LANE . HIGH LEGH . NR KNUTSFORD . CHESHIRE

NEWSLETTER

PUBLISHED BY HIGH LEGH COMMUNITY ASSOCIATION | DISTRIBUTED AT NO CHARGE TO HIGH LEGH RESIDENTS

Issue 162

**WINTER
2023**



**HIGH LEGH
COMMUNITY
HARVEST
FESTIVAL**

High Legh News

The Newsletter is published by the High Legh Community Association. It is written and distributed by High Legh residents.

Download from
www.highleggh.org.uk

For regular email notifications about High Legh events email
whatsoninhighleggh1@gmail.com

If you want to Hire the Village Hall please contact Helen Wright the Village Hall Manager.
highlegghvhall@gmail.com
07703 194052

If you want to publish an advert or have information about a local social event or news that might interest High Legh residents email Gail Coenen at:
gail.coenen@btinternet.com

**DEADLINE
for the
SPRING
NEWSLETTER
is Friday 2nd
February 2024**

Produced by Mustang Marketing Ltd
07823 550973
www.mustangmarketing.co.uk

© High Legh Community Association
2023
Registered Charity No 511391



Note from the Editor

Hello! As we head into the darker nights and towards Christmas, this edition focuses on 'What's on' In High Legh Village Hall!

The regular users have each written a little bit about their activity, with contact details if you are interested in joining the group. The Hall is a magnificent building thanks to people like Mike Walker, Colin Carter and Jenny Pearce, who over the last 15 years have made the facility what it is today. High Legh residents get a discounted hire price for renting the hall, and I remember with much fondness holding my daughter's Halloween birthday parties there!

There is an article thanking Su and Colin Carter for their services as treasurer and Village Hall maintenance. I 'recruited' Su and Colin into the CA 8 years ago, and have spent many a happy hour with them, organising events, fixing problems and just having a right old laugh! Thank you for the hundreds and hundreds of hours you have given to High Legh, making it a better place to live!

Dare I finish with I hope you all have
a very merry Christmas time
(Oh dear too early!) HO HO HO.

Gail Coenen - Editor
email: gail.coenen@btinternet.com
07557 678977

The opinions expressed are those of contributors, and not necessarily those of HLCA.

High Legh Community Association. The Village Hall, West Lane, High Legh, Nr Knutsford Cheshire WA6 6LR.

MP MERILYN PHILLIPS
exquisite interiors



- KITCHENS
- BATHROOMS
- BEDROOMS
- HOME STUDIES

Over the past 35 years Marilyn has been harnessing her skills and resources to bring innovative and inspirational designs to her clients.

Her experience and that of her design team ranges from one-off pieces to whole house projects. Marilyn's unrivalled passion and ability to understand her clients' needs and aspirations is a breath of fresh air.



BESPOKE | LIFESTYLE | INNOVATIVE | INTERIORS

64 Telegraph Road, Heswall, Wirral CH60 0AG

T: 0151 342 2144/7 M: 07773 540888 E: merilyn@merilynphillips.co.uk



**Sheldons Dairy... Supporting the Local Community
in all weather, delivering fresh local milk and
produce to your door, since 1965. FREE DELIVERY**



Fresh Cheshire Whole Milk from Greenoaks Farm, Mobberley



Massey's Potatoes, Snelson



Abbey Leys Farm, High Legh



Bexton Cheese, Knutsford

Visit: sheldonsonline.co.uk
or call 01565 634509



The Children's Adventure Farm, (CAFT).



A local charity which has been creating memories to last a lifetime, for children living with chronic illness, disability & social disadvantage, for more than 30 years.

The Children's Adventure Farm Trust is based at the beautiful Booth Bank Farm, a 17th Century farmhouse set in the heart of the countryside, in Millington, Cheshire. High Legh, Knutsford, Lymm and Altrincham are all within 5 miles of our natural, peaceful, 10-acre site.

CAFT offers opportunities for children who have a variety of medical, physical, learning and social needs which prevent them from enjoying everyday childhood experiences. Sadly, for these children, life can be far from carefree and fun. Many deal with challenges on a daily basis that most of us couldn't possibly comprehend. Their additional needs or social disadvantage limits their opportunities, as many mainstream leisure facilities are not equipped to deal with their mobility needs, challenging behaviours, or emotional difficulties.

In 2023, a record 18,500 children will visit CAFT, for a day visit or residential stay. Whilst with us, children are encouraged to participate in fun, memorable activities designed to challenge and entertain them. Time with us allows them to simply be children and enjoy the fun and freedom this time of their lives should bring. They'll meet new friends, grow





in confidence and independence, and are shown that they have the right to aspire to a future beyond what they thought possible.

Across our forthcoming Halloween & Christmas programmes, over 5,000 children and their siblings, parents & carers, will enjoy time with our amazing animals, in our

adventure play area and magical woodland, with themed activities, crafting and entertainment to suit all ages and abilities.

We are a registered charity. We do not receive any government funding. To deliver our provision free of charge, for all our users, we raise over one million pounds

annually. We do not spend money on marketing or advertising and all funds raised go directly towards supporting our visitors, maintaining our site and funding our staff.

There are many ways to support our work. Just £12 funds a half day visit for a child and their family. In addition to financial donations, contributions of food for both our visitors and animals, assets for our allotment and sensory garden, cleaning materials and more, all make our work possible. These can be dropped to the Farm on appointment or pick up can be arranged. Donations of quality clothes, books and toys can be donated to our charity shop

on Canute Square, in Knutsford. An army of volunteers help to maintain our site & create amazing moments for all our visitors. We rely on people, community groups and companies in High Legh and further afield, who offer their time, ideas and resources to CAFT. If you'd like to get involved with our work, please email us: hello@CAFT.co.uk or call on **01565 830053**.

We recognize that changing a child's life may not be possible, but making a difference is. Could you help us continue our important work, through this year, 2024 and beyond?

To learn more visit CAFT.co.uk
Contact hello@CAFT.co.uk / Call 01565 830053
 Or follow us [@CAFTcharity](https://www.instagram.com/CAFTcharity)



GRAPPENHALL
KITCHEN COMPANY



Did you know we are a family run business?

If you purchase your kitchen from us, Neil & Carole will also take care of the whole project.

From the first measurement to the final finishing touches.

- ✓ Removal
- ✓ Electrical work
- ✓ Plastering
- ✓ Plumbing
- ✓ Tiling
- ✓ Flooring
- ✓ Installation

We have the proven expertise to oversee your project from concept to completion.



Established 2019
Craftsmanship since 1987

www.grappenhallkitchens.uk

grappenhallkitchens@gmail.com 01925 967656



HIGHLY EXPERIENCED
BEAUTY THERAPIST
BASED IN HIGH LEGH

TREATMENTS INCLUDE:

- DERMALOGICA AND NON SURGICAL TREATMENT FACIALS
- SEMI PERMANENT EYEBROW TATTOOING
- SHELLAC NAILS
- WAXING

• OTHER TREATMENTS AVAILABLE

Fully Qualified & Insured
Work Safe Certified



☎ 07939 204 137

✉ Kaybbeauty@mail.com

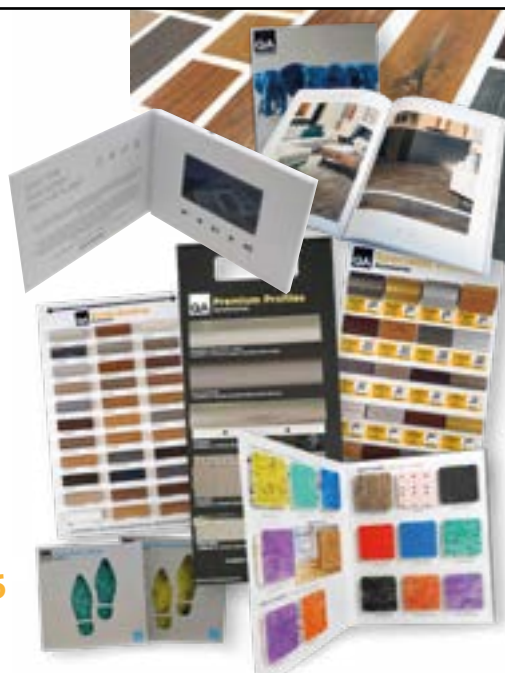
📷 @Kayburnsbeauty

mustang
m a r k e t i n g

Increase your sales with a wide range of point of sale marketing products.

- Luxury Brochures
- Product Folders
- Hanging Boards
- Sample Pieces
- Video Brochures

For further information
please contact **01925 754766**
or visit **mustangdigital.co.uk**



High Legh Village Hall, West Lane, Available for Hire

For your own parties, function or
business events?

The High Legh Village Hall has been well maintained and improved over the years; it now offers a modern interior with all the facilities you would expect, and more.

The main hall will comfortably accommodate 80 people, plus an extra 10-20 in the side room, if booked separately. Tables and chairs are available. There is a small area available for outside seating.

- ✦ The main hall also has a modern PA and speaker system and a large flat screen TV, which can be hard wired or connected via Bluetooth. A mirrored wall offers an extra facility for dance/exercise classes, but can be covered over with electric blinds. The windows also have remotely operated electric blinds.
- ✦ The kitchen was renewed in November 2016. It includes an oven, hob, industrial dishwasher and catering fridge, plus crockery and cutlery. It also has a boiling water dispenser.
- ✦ Free Wi Fi is available throughout the building.
- ✦ Upstairs there is a meeting room with flat screen TV set out to accommodate 12 to 16 people in a conference layout. This room also has hot and cold water and tea/coffee making facilities.

- ✦ There are men's and ladies' toilets on the ground floor plus an accessible toilet for wheelchair users.
- ✦ The hall has an accessible entrance.
- ✦ The building has its own car park at the other side of the road, with space for 42 cars, plus 2 disabled bays by the entrance



Contact Helen Wright for all bookings and queries on **highleghvhall@gmail.com** or **07703194052**.

Village Hall users ...

Do you know what goes on in our wonderful Village Hall? There are lots of things you can get involved in and below is a flavour of some of the activities that happen every week or month.

Joanne Elaine School of Dancing

offer classes from 18 months to Adult, with a range of classes including Ballet, Tap, Modern, Jazz, Commercial and Acro dance. We are a fun and friendly local school that offer the opportunity to take accredited dance examinations and to perform in our Bi-annual showcase.

For more information contact Joanne - 07732 8199894
jeschoolofdancing@gmail.com



Sound Bath Experience, every 1st Sunday of each month at 6-7pm at High Legh Village Hall. A sound bath is a therapeutic practice that involves immersing oneself in the soothing sounds and vibrations produced by various instruments, such as singing bowls, gongs, chimes, etc. The vibrations and harmonious tones are believed to promote healing, reduce stress, and induce a state of



deep relaxation and inner peace. Sound baths are gaining popularity as a form of sound therapy and mindfulness practice.

During a Sound Bath, you'll have the opportunity to clear your mind of distractions and tap into a state of deep relaxation. This can lead to improved sleep, reduced stress levels, and enhanced moods. Say goodbye to negative emotions like anger and frustration, as you embrace a renewed sense of calm and tranquility. It is truly a unique experience.

For any enquiries or to book your space, contact Gemma at Grey Matter Healing on 07718 788887. You can also find us on Facebook or Instagram.



Sumitup Bookkeeping *Here to help with*

- Regular bookkeeping to keep your records accurate and tidy.
- Submission of accurate VAT returns, on time, avoiding penalties.
- Monthly reporting so you 'know your business' and can make informed decisions.
- Monthly Payroll calculations and submissions.
- Freeing up your time to run your business.

AAT qualified * Over 20 years experience in many industry sectors *
Expert in but not limited to Xero, Quickbooks, Sage, FreeAgent and Hubdoc.



Call Sarah Antrobus on **07780 675694** for more information



Church and Bible Study is a group of Christians who meet every Sunday morning at 10:30am and Thursday night at 7pm at the Village Hall for Church and Bible study. These meetings are free and we welcome anyone who would like to visit.



We are a friendly group of people who are hungry for God, His Word and to see Him move by His Spirit. We believe in healing and miracles through the power of God. On Sundays we have lively praise and worship, prayer and teaching from God's Word and on Thursday nights, we are teach the subject of healing.

For more information, please contact Owen on: Email: ukrevival@fromtheseshores.com Mobile: 07541 930607

High Legh Bridge Club

meet in the Village Hall each Monday at 7:05- finishing 9:30-10:00pm

Hosting tables for both rubber and duplicate bridge, we are a friendly club with several social activities over the year.

Our members have a range of ability, from novice to those with extensive experience.

Annual membership, £5, weekly subscription £2 incl coffee/tea and biscuit.

Like to join us? Contact George Bradshaw on
George.bradshaw14@gmail.com

Pilates classes are run by Wendy Ryan, formally a physiotherapist, and a qualified Pilates instructor for 14 years!:-

Pilates is a form of slow controlled exercises that focuses on balance, posture, strength and flexibility. It's suitable for people of all ages and fitness levels.

In the Village Hall on Tuesday morning.
10.30 -11.30am and
Wednesday morning. 10.45 - 11.45am

For more information Contact
Wendy Ryan :- 07900953584





The WI welcomes women who wish to join us and invite you to come along to our meetings second Tuesday in every month 7 30pm at the High Legh Village Hall.

You will meet women in your community and be amazed by their kindness, skill, and ability to do most things which never fails to inspire.

Recently we have had a garden party in Jean Evans garden, a boat trip on the Dee in Chester, been to the Story House in Chester to hear Phillipa Forrester, a very inspiring lady conservationist and pioneer. We have booked a room at the Cottons for Christmas lunch.

We have fun and learn many new things; come and join us you will be made welcome. The picture below is of a WI trip to the Opera House in Manchester when 10 WI members went to see the Drifters.



'It was a fantastic way to spend the afternoon, with great music and great friends' said Jean.



Friday 17th November
7.30pm
at
High Legh Village Hall

Tickets £10
inc. bingo tickets, prizes & welcome drink
(Bar Available)

Contact: Nic - 07984077068 /
nickeeley@btinternet.com

or

Lou – 07733275348 / lallan@icasl.com

All proceeds to High Legh Community Association, Charity No: 511391



Mind the Step Appalachian Dancers

perform at a variety of events throughout the year to promote and share our love of dancing.

Appalachian dancing is energetic, exciting and fun. It's performed in tap shoes and has its roots in English Clog, Irish and native American styles of dance.

We practice weekly on a Sunday evening, 7.30pm to 10pm at High Legh Village Hall.

We are always open to new members, no experience necessary so if interested, check us out on YouTube or our Facebook page.

For further details or to book us please contact: cathj123@hotmail.com



Tai Chi is a Chinese ancient art that embraces the mind, body and spirit, which regulates all systems within the body improving digestion, respiration and circulation, stimulates the central nervous system, lowers blood pressure, cholesterol, and reduces coronary heart disease. Due to its special relaxation in heart, spirit, and mental Tai Chi can also lead to a reduction in stress-related disorders. The low-impact nature of the routines improves the condition of bones, joints and muscles without strain whilst encouraging internal energy, balance, focuses, flexibility and co-ordination to promote health and vitality within the individual.



Contact details: Xianglin (Joe) Li
Phone: 07500827965

url: www.taichiforlife.uk

Days and Times – in the Village Hall every Thursday 3 - 4 pm

High Legh Bowling Club

hold indoor bowling sessions in the village hall in addition to outdoor bowling on the club's green.

Indoor short mat bowling is held on Monday and Wednesday afternoons from 1:30 to 3:30 pm open to all members and Wednesday evenings by invitation from 7:00 to 9:00 pm.

The club also enters two teams in the Cheshire Villages Indoor Bowling Tournament on Sunday afternoons during the winter months.

The club also holds fund raising events each year in the village hall such as Sunday Teas and beetle drives as well as our annual Presentation Evening.

If you are interested in joining the club contact: Jackie Springall (secretary) 07929 049994



Yoga for everyone!

From pre school through to adults, the new HIMOS hub yoga classes, run by Clare aim to get you moving your bodies, connecting to mindful breathing exercises and enjoying some blissful relaxation time.

"After practicing yoga we feel relaxed, connected, and in flow and therefore are able to feel more joy in our lives! I would love to be able to connect more of the community to mindfulness and offer children mindful techniques to bring into their daily activities!"

Pre school class, third Monday of each Month 10-11.30.

Primary ages, Tuesday 4-5

Adults, Wednesday 9.30-10.30

Contact Clare 07792164672



THE ULTIMATE COMBAT GAME

BATTLEFIELD LIVE Knutsford

step out of the game and into the battlezone. Unleash the Marine in you

No pain
No paint
No bruises
just adrenaline fuelled fun

BOOKINGS: 07779248622 Email: bookings@battlefieldliveknutsford.co.uk
www.battlefieldliveknutsford.co.uk

Sick or broken computer?

We're here to help



30+ years experience

Windows / Mac / Linux / ARM (Pi etc)

Laptop / PC repairs & upgrades

Tailor-made computers (home, office, gaming...)

Setup and data transfer

Older customer friendly

Jargon-free help staying safe online

Rcomp

On-site visits, over-the-phone advice or remote assistance

Fair & affordable pricing

Andrew
& Allan

01925 755043

rcomp@rcomp.co.uk

High Legh, Warrington, Knutsford, Lymm, Altrincham



Lymm Runners
Club Number 7663040

High Legh Robert Moffat Memorial 10k - make 2024 your year!

Sunday 17th March, 2024 at 11.00am



After the course record came under serious threat last year, we are thrilled to announce that entries are now open for the fourteenth running of your favourite 10k race back at the usual time of 11.00am on Sunday March 17th 2024. See www.highlegh10k.org.uk. And the good news is that places are filling fast. One of the most attractive features of the race is that it involves the whole community as it's organised by the High Legh Community Association with Lymm Runners. Delicious sandwiches and cakes are provided by the PTA, plus there are wonderful prizes and support from generous local sponsors.

Those who have entered the race before will know what a fun and friendly race it is, as it caters for all abilities. It's even been noticed by the National press, including the Guardian who described it as 'one of

the best races in the UK' and Runners' World who praised it as 'well organised, competitive and welcoming.' There's a chance for 15 minutes of fame for entrants as the fabulous Cheshire Mix 56 Radio will be broadcasting, LIVE from the event.

Now is the time to make this your year. You can aim just to get round it or set a personal best if you like! The choice is yours.

If you don't want to/cannot run, a wonderful aspect of the race's success over the years is the volunteers, especially the Marshals who make such a difference with their friendliness and making sure that the runners are safe. If you would like to be a Marshal then please contact **Dave Kirby** (Marshals Coordinator) via the website or email dave.kirby10k@gmail.com. Thanks!

Please note also that there will be the usual road closures around the school (on Wrenshot Lane from 8.00am – 13.00pm, and a short closure on Pheasant Walk up to North Drive just before and after the start of the race at 10.30am. A letter will be delivered to all affected residents with full details as usual.)

Nick Gerrard, Chair of the Race Committee on behalf of the High Legh Community Association and Lymm Runners

Email: raceadmin@highlegh10k.org.uk

So you now have several options: Start or continue your training, register for the event or become a Marshal. Whatever you decide, we look forward to welcoming you at High Legh Primary School on Sunday 17th March at 11.00am.

High Legh Parish Council Statement on the future of HS2



As we have now heard in the media HS2 Phase 2 will be scrapped. A question I am often asked, is it possible for that position to change after the next General Election. The answer is no!

All Safeguarded land south of Rostherne near Ashley down to Handsacre near Litchfield will be released very quickly. All property owners who had to sell will have first option to buy back. This includes all land on the safeguarded Golborne Link. This is a legal status on the land which cannot be reversed easily.

Also the money which was allocated for the building of HS2 phase 2 is being given to local leaders to use on other transport projects which they can priorities. They are already drawing up plans to extend the metro link to Bolton for example. This will be of much more benefit to the North and Midlands and other parts of the country.

Safeguarded land to the north of Rostherne into Manchester is being retained until further review in the summer, to give the option of Northern Powerhouse Rail to build onto existing HS2 plans into Manchester. It is my view that this will not happen because that route requires the construction of a tunnel 36 meters under the Manchester suburbs eight miles in length, plus the construction of a station at Manchester Airport (without which it would not make any sense to have a zig zag line from Liverpool to Manchester)

The cost of both those projects would cost over the budget of £12billion allocated for the whole line from Liverpool to Manchester. And that is before you consider extra platforms at Manchester Piccadilly and build a railway from Rostherne to Warrington Bank Quay and onto Liverpool. It is much more likely that an alternative scheme will be developed integrating existing travel corridors.

As some of you will know The Parish Council have been very active in opposing HS2 plans in the area for many years including appearing at parliament select committee hearings three times giving evidence on behalf of Rudheath, Mere and High Legh. We are delighted that government have finally listened to reason.

Cllr Nigel Hennerley



Fresh local flowers for every occasion
delivered to your door

Free delivery within a 5 mile radius

Spring, Summer & Christmas Workshops
in my Flower Barn at Aston by Budworth

VERY POPULAR

Ring me on 07970927161 or landline 01565777262
for more information or pop in (ring before you come just in case I'm out delivering)



**NEW DOG WALKING
SERVICE BASED IN
HIGH LEGH**

FULLY INSURED AND DBS CHECKED

Text / WhatsApp
Paula: 07746 839098
paula@lymmandknutsforddogwalking.co.uk

Your Gardening Man



- Lawns and borders
- Edges and hedges
- Patios, drives and gutters
- Garden makeovers

Call Colin on 07470 427884 for all your garden maintenance needs.



HIGH LEGH PODIATRY

Georgina Pierce BSc DPodM MChS
HCPC Registered Chiropodist / Podiatrist

- + General Footcare
- + Gait Analysis
- + Ingrowing Toe Nails
- + Diabetic Foot Assessments
- + Verruca

HOME VISITING SERVICE FOR ALL OF YOUR FOOTCARE NEEDS

Telephone **07845678918** to arrange an appointment
Email podiatry.gina@gmail.com




High Legh Community Association

COFFEE AND FRIENDSHIP



The September Coffee and Friendship morning was well attended and raised £229.60 plus gift aid for Macmillan Cancer. Thank you to all who donated.

The coffee and friendship mornings continue to be popular and it is an opportunity for High Legh residents to enjoy a free cup of coffee/tea and homemade cake, meet new friends and catch up with old friends and neighbours.

We couldn't run the coffee mornings without the small team of dedicated bakers who make delicious cakes for all to enjoy and the helpers who prepare the hall and serve the drinks so many thanks to these volunteers.

The next coffee mornings are on 26th October and 23rd November. The Christmas lunch is on 14th December, 12 until 2pm, and you can book with Doreen or Trish at the October or November coffee mornings.

For more information contact
Trish Adams on 01925 755983, email trishhlca@gmail.com or
Doreen Walker on 01925 754818, email doreenwalker@btinternet.com

FOLIUM

- Soft Landscaping
- Fencing
- Tree Surveys
- Forestry Management

T: 01565 634233
M: 07768776877



E: paul.manley20@btinternet.com



love,
peace,
and joy

DEC
14

*Church Warrington will be hosting
CAROLS AT THE HALLIWELL JONES
STADIUM WITH SPECIAL GUEST J. JOHN*

All are welcome. Event begins at 7:00pm.

FREE tickets available now.

Scan the QR code or visit www.churchwarrington.co.uk



ORCHARD SERVICE STATION LTD



OAK TREE GARAGE
WARRINGTON ROAD
HIGH LEGH WA16 0RT
(NEXT TO THE BEARS PAW)

- SERVICING
- BATTERY
- TYRES
- MOT
- EXHAUSTS
- BRAKES

TEL: 01925 755516



Chambers
Fletcher
Solicitors

- Residential Property
- Commercial Property
- Family Law & Divorce
- Wills, Trusts & Probate

Stockton Heath Office

01925 359005

Northwich Office

01606 780400

www.chambersfletcher.co.uk

Moggy n Mutt

- Dog Walking
- Dog Sitting
- Cat Visits
- Small Pet Care
- House Sitting

Call Donna: 01925 752173
Pet Care Services www.moggynmutt.co.uk

BLAKESLANDSCAPES

Installing **NEW** or re-laying existing patios
Decking • Block paving • Fencing
Turfing & Planting • Artificial grass

RICKY BLAKE 07790 603522
rickyblake02@gmail.com

Chambers Fletcher Solicitors

- Residential Property
- Commercial Property
- Family Law & Divorce
- Wills, Trusts & Probate

01925 359005

Cambridge House, Suite 4, 16 Walton Road, Stockton Heath, Warrington, WA4 6NL

GARY PERCIVAL

Tel: 01925 419009
Mob: 07970 252 001
garypercivaldecorators@gmail.com

PAINTER & DECORATOR

LOCAL ELECTRICIAN
NICEIC Registered

Over 25 years in business
From a fuse in a house, rewire
No Job too small
Please ring Ben Entwistle
07763 400405

MAN and VAN

- Careful, Considerate Man with Large Van
- Courier Service - Full or Part Load
- White Goods, Motor Bikes, Furniture
- Full or Part House Clearance
- Licensed for Rubbish Removal

Phone Tom Ford
07747 415330

ADVERTISE YOUR BUSINESS HERE

REGULAR EVENTS

- **We're Hooked 2:00pm - 4:00pm** St John's Church Room
Every Monday except Bank Holidays - £3 including resources and refreshments
- **Little Acorns 9.30am-12noon**, St John's Church Room
Every Tuesday morning - For pre-schoolers and parents/carers
- **Mothers Union 2:00pm** St John's Church Room
1st Tuesday each month
- **Coffee, Create & Chat 2:00pm** St John's Church Room
2nd Tuesday each month
- **Community Lunch 12:30pm** St John's Church Room
3rd Tuesday each month
- **St Johns Telephone Service Thursdays 7.30pm**
contact Chris Stanistreet: 01925 755559
- **Farmers Market** Abbey Leys Farm, Peacock Lane - First Sunday of the month in the morning
- **High Legh Community Observatory 7.30pm**, talks are in the Church Room on the second Thursday of each month and are open to all - Admission £4
- **The Observatory** is open at Abbey Leys Farm on the first Sunday of each month if the weather is fine

NOVEMBER

Monday 6th - 7.30pm - Parish Council meeting, Village Hall all welcome Village hall upstairs room

Sunday 12th - 10.00am - Remembrance Sunday, All Age Communion Act of Remembrance

Friday 17th - 7.30pm - Bingo Night, Tickets Nic on 07984 077068 or Lou on 07733 275348 £10, Village Hall

Saturday 18th - 2.00pm - Afternoon tea and speaker £15, St Johns Church. Medical Detection Dogs Charity Tickets Elaine 01925 753111 or Nick 07554 343133

Sunday 19th - 2:30pm - Community Association AGM, Village Hall, all welcome

Thursday 23rd - 10:30am - 12:00noon - Coffee and Friendship, Village Hall

DECEMBER

Monday 4th - 7.30pm - Parish Council meeting, Village Hall all welcome Village hall upstairs room

Thursday 14th - 10:30am - 12:00noon - Coffee and Friendship, Village Hall, Christmas Lunch

MARCH

Sunday 17th - 11.00am - High Legh Robert Moffat 10k Run

ADVENT & CHRISTMAS SERVICES AT ST. JOHN'S

- **Sunday 3rd December - 1st Sunday of Advent, 10am**
Holy Communion
- **Sunday 10th December—2nd Sunday of Advent,**
All Age Holy Communion 4pm Christingle
- **Sunday 17th December—3rd Sunday of Advent 8.30am**
Holy Communion (traditional language) 10am Café Church
- **Christmas Eve—4th Sunday of Advent 10am**
Holy Communion 4pm Crib service 6.30pm 9 Lessons & Carols
- **Christmas Day 10am** Christmas Day All age Communion
- **Sunday 31st December 10am** Holy Communion

SAVE THE DATE

- **Thursday 6th June 2024 D Day 80th** - We will be organising an event and lighting our Beacon. If there is anyone in the village that had some involvement in the D-Day landings or WWII as a whole, please get in touch with the Parish Council.

REGULAR SERVICES AT ST JOHN'S

- **1st Sunday 10am** Holy Communion Service
- **2nd Sunday 10am** All Age Holy Communion
- **3rd Sunday 10am** Holy Communion
- **4th Sunday 10am** Holy Communion Café Church in the Church Room (informal gathering with breakfast!)

HIGH LEGH PODIATRY

Home visiting service for all of your footcare needs
Georgina Pierce BSc DPodM MCNHS

HCPC Registered
Chiropodist / Podiatrist

T:07845 678918
E: podiatry.gina@gmail.com

NORTH CONTRACTING

- Septic tank emptying
- Paddock maintenance
- Flail hedge cutting
- Flail grass cutting

Contact Neil on
07973242808
www.nworthcontracting.co.uk

Fitted Kitchens, Bedrooms, Studios, Fitted Lounge Furniture

ALL NEW PALE COLOURS
IN SOFT TOUCH VINYL
SOLID NATURAL OAK
HI GLOSS, STAINLESS STEEL

MARK TAYLOR
07966 421195

Interior and Exterior Decorator
DAVID S HOUGHTON

Plumbing, joinery and property repairs also undertaken

Tel: 0161 865 5865 Mob: 07803 007236
daveshoughton@gmail.com

hca AGM

High Legh Community Association invites all High Legh residents to attend the 2022/23 HLCA AGM

on Sunday 19th November 2.30pm
in the Village Hall

Donna L. Lowe M.Ch.S
State Registered Chiropodist

Surgery: 17, Ashley Rd, Altrincham, WA14 2DT

Telephone
0161 928 5033

HOME VISITS BY APPOINTMENT

ORCHARD SERVICE STATION

SERVICING & REPAIRS
MOT TESTING
EXHAUSTS FITTED FREE
WARRINGTON ROAD
By the Bears Paw

Tel: 01925 755516



David**BLAKE**

Stream

Cleaning Services



- We clean windows, gutters, solar panels, conservatories, patios and drives using traditional methods and "Waterford pole cleaning systems"
- Clear moss from roofs • Wasp nest removal

M: 07710 969 327

15 Oakfield Avenue, Knutsford WA16 8JB.



Fully Insured



PAH

GARDEN MAINTENANCE

We cover all aspects of garden and grounds maintenance

- Gardening
- Hedge Trimming
- Turf Laying
- Artificial Grass
- Planting
- Jet washing
- One off garden maintenance/ tidy ups

M: 07956 680 219

PAHEXTERNALWORKS@GMAIL.COM



High Legh Community Association NEWS & EVENTS



COMMUNITY ASSOCIATION ANNUAL GENERAL MEETING

**High Legh Community Association invites
High Legh residents to attend the HLCA AGM on
Sunday 19th November 2.30 in the Village Hall**

High Legh Community Association is a registered charity that:-

- **Maintain & run the Village Hall**
- **Promote and organises leisure activities**
- **Communicate via the Website, Newsletter & What's On**

At the AGM we will show you what events and activities the Community Association Council have been doing over the last year.



"All welcome to come along and have your say and enjoy a cup of tea."



Leathercare Ltd

'Connolly Leather' trained & approved leather upholstery maintenance & renovation services since 1988.



Professional leather upholstery cleaners, conditioners & barrier creams available.

Tired, worn, or damaged automotive leather interiors brought back to their former glory by the experts using only genuine tannery materials.

- Mercedes
- BMW
- Audi
- Range Rover



T: 01925 851621 / 07836 326600 E: leathercareltd@gmail.com

www.leathercaredirect.com

13 Brook Farm, Swineyard Lane, High Legh, Knutsford, Cheshire, WA16 0SD, United Kingdom.



This time of year sees the return of the Summer triangle, the trio of stars comprising Vega, Altair and Deneb, a beautiful sight.

Solar activity is once again on the increase which means the presence of sunspots, slightly cooler regions of the solar disc. We can safely observe the Sun using our special solar telescope.



“We continue our regular monthly talks. In July we welcomed back Dr. Helen Jermak of Liverpool University”

Her topic this time was on ‘Building the world’s largest ground-based robotic telescope’ and she brought some of the kit involved with this project.

In September I gave a talk entitled “On getting into orbit” about the various orbits around the Earth and some of the satellites that populate them and on which we rely for modern communications. Talks are held in the Church room on the second Thursday of each month. We have installed a second mount adjacent to the dome. This will take two telescopes.

The observatory is located at Abbey Leys Farm. and is open to all in the community of any age – no annual fee or subscription. (donations welcome). We open at dusk on Friday nights if the sky is clear. We are also open for the Abbey Leys Farmers Market on the first Sunday of each month if the weather is fine. This provides the opportunity for visitors to look at our facilities in the daylight and, if the Sun is shining, to view it safely through our solar telescopes.



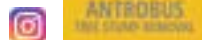
John Anderson 01925 75 5570 www.highlegghcommunityobservatory.com



Antrobus Tree Stump Removal

- Various machines to suit all sized stumps
- Domestic and commercial works carried out
- Full public liability insurance up to £5m

Please check out our YouTube, Instagram and Facebook pages for previous works carried out and customer feedback and reviews.



Call Paul Antrobus on 07392 618808 for a free quote

A massive thank you to Su and Colin Carter who are retiring from their respective roles with the Community Association at the AGM in November.



Su has been the Community Association’s Treasurer since November 2015 and has been keen to retire from this role for the last 2 years so we are especially thankful that Su has stayed on until we had a volunteer to take over. Su has kept our accounts in order and has seen the introduction of on-line banking and more recently the introduction of the card payment machine, an important way of paying at community events.

Su has also been involved in the organising of Sunday Teas as well as being a regular baker and helper. Another role that she has been involved with is the 10k race, representing the CA at meetings with our partners Lymm Runners, supervising the income and expenditure, helping recruit sponsors, assisting at the school to making up the runner’s goody bags and helping on race day.

As Treasurer Su has been involved in all the events that the Community Association organises but as well as her financial role Su has also helped with the organising and volunteering on the day at many of these events.

I’m sure that in the future Su will still be lending a helping hand and volunteering.

Colin has also been involved in supporting the CA but in a more hands on way. He was a key member of the Village Hall Management Committee and was involved in many of the improvement projects in the hall including the new kitchen and technical improvements.

After the VHMC disbanded in 2017 Colin continued to provide support for the Village Hall both practically and administratively. Colin’s knowledge and practical skills have been invaluable when researching solutions to problems and improvements at the Hall and communicating with contractors as well as managing insurances, organising fire safety checks and much more. He is the font of all knowledge about anything technical at the hall.

Colin has now handed over a lot of documentation and information about the Hall but we have not managed to recruit somebody to take over Colin’s maintenance role which leaves a massive hole.

“On behalf of the Community Association and High Legh residents we thank Su and Colin for all they have done to support the Community Association and the Village Hall and wish them well in their retirement from their volunteering roles.”

Thanks also to Sharon Senn who has done the annual audit of the Community Associations accounts for 9 years and helped with the production of the Accounts brochure.

Trish Adams, CA Chair

DOBB LANE CLOSED

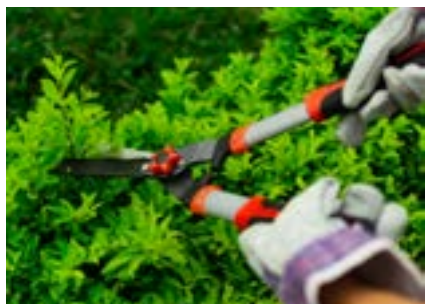
The farmer has closed this farm track off as there are unsafe trees along the track. This is in Mere and it is not a Public Right Of Way. There is an application at CE for it to be changed to a PROW but it will probably take some time.

SAVE THE DATE

for D-Day 80 Anniversary event on 6 June 2024 when we have been asked to light the beacon at 9.15pm. We are hoping to have fish & chips available as it is also National Fish & Chip Day.

ROAD SAFETY

Please keep your hedges and shrubs trimmed to keep pavements clear so



they are safe to walk on. You can report any Highways problems, fly-tipping and streetlights out on fixmystreet.cheshireeast.gov.uk. CE will be carrying out slurry seal works on Rensherds Place pavements on 17-23 November.

GARDEN WASTE

From January 2024, if you'd like CE to continue collecting your garden bin, you'll need to be signed up to the Garden Waste Recycling Scheme. By opting-in to the service, you can continue using your garden bin to recycle your garden waste and will pay an annual subscription fee of £56 for it to be collected. The quickest and easiest way to sign up will be via CE's website [Garden bin subscription \(cheshireeast.gov.uk\)](https://cheshireeast.gov.uk)

No 47 BUS

Warrington Borough Council has withdrawn part of its No 47 bus service, High Legh to Knutsford because of low passenger numbers. The service between Knutsford, Mere and High Legh has now ceased. Cheshire East Council has been supporting the borough element of the service at a cost of £20,000 and the council have now removed that funding. Cheshire East Council is carrying out a review of its supported bus network and due consideration will be given to parts of the borough no longer served by public transport. The council will continue to look at opportunities to improve bus routes in this part of the borough.

POLICE

The Police & Crime Commissioner John Dwyer attended our meeting in September and told us that we will have two PCs to cover our area instead of a PC and a PCSO. Please ring either 101 or 999 to report any issues.



COACHING UPDATE

Our Junior Coaching is divided into four specific age groups: Mini Tennis Red (3-8 years), Mini Tennis Orange (9 years and under), Mini Tennis Green (10 years and under) and Junior Tennis (11-18 years). Each age group uses a different colour ball, a different size court and a different size racket.

The group lesson courses enable juniors to learn all the techniques and tactics needed to improve their game in addition to learning the rules of tennis. The coaching programme for the Autumn Term is:

DATE	TIME	GROUP DESCRIPTION	FOR PLAYERS BORN IN
Wednesday	4pm-5pm	Mini Red Group	2015 or later
Wednesday	5pm-6pm	Mini Orange Squad	2015 or 2016
Wednesday	6pm-8pm	18 & Under Group	2005 - 2010
Friday	5.30pm-6.30pm	16 & Under Group	2007 - 2012
Friday	6.30pm-7.30pm	18 & Under Group	2005 - 2007
Saturday	9am-10am	Mini Red Group	2015 or later
Saturday	10am-11am	Mixed Orange, Green, 12 & Under Group	2011 or later
Saturday	11am-1pm	16 & Under Group	2007 - 2010
Friday	9.30am-11am	Adults All Abilities	Adults

INDIVIDUAL LESSONS

For any information on the coaching programme or if you are interested in any individual lessons please email Emma (emmasilcock@mail.com)

TENNIS MEMBERSHIPS

For all membership please go to the website link: - <https://clubspark.lta.org.uk/HighLeghTennisClub/Membership/Join>

If you would like any information on the tennis at High Legh Tennis Club, please don't hesitate to contact Emma on: Emma Silcock emmasilcock@mail.com 07985605565

Next PC meetings: Monday 6th November at 7.30pm. at High Legh Village Hall.
If you would like to subscribe to our email updates, please email the clerk
Mrs Doreen Walker (Clerk) Tel: 01925 754818
Email: clerk@highleghparishcouncil.gov.uk www.highleghparishcouncil.gov.uk

High Legh Riding Centre is based at Mill Farm, Moss Ln and is a great outdoor learning experience! They are a vibrant, friendly, and highly professional local riding school based in High Legh owned by John & Abi Shaw.



They pride themselves on making a huge amount of difference to both children and adults, helping to build confidence and to give social opportunities within a safe environment.

Their provision creates moments for everyone to have fun as they learn and try something new. Clients & liveries of all ages have given so much positive feedback and they are so proud of what the team do everyday.



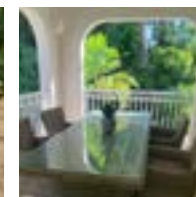
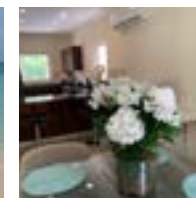
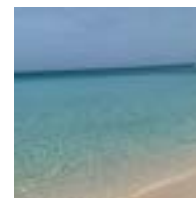
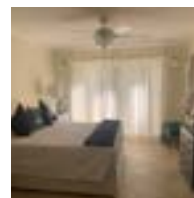
The wellbeing of their ponies, staff and clients is so important to them and their services include bespoke small group lessons with highly skilled and qualified instructors, school holiday pony camps for children aged from the age of 4 and in house helper training & rewards scheme to support our young adult clientele. Do get in touch if you would like to begin or return to a new adventure.



Info@highleghridingcentre.co.uk
M:07584823040
www.highleghridingcentre.co.uk

FABULOUS BARBADOS RENTAL

2 BEDROOM APARTMENT TO RENT ON THE WEST COAST OF BARBADOS



Reasonably priced luxury villa in a small gated community available to rent with shared pool, fully fitted with all equipment necessary to enjoy your stay.

2 minutes walk from secluded beach and 5 minutes walk from Mullins.

For enquiries Call or email Liz on 07905 741 969
elizabeth.w1923@icloud.com

High Legh External Cleaning

Window cleaning service

ALL DOORS, FRAMES AND SILLS CLEANED ON EVERY VISIT

- Windows
- Gutter clearing
- Soffits/fascias
- Conservatory roof cleans



Please call Gareth on 01925 879355 / 07305 839434
 or email highlegh.property@gmail.com
www.highleghclean.co.uk



High Legh Sunday Teas

Thank you to all the groups that took part in the famous High Legh Sunday Teas held in the village hall this year and although it was a shorter season than usual it was successful with groups raising crucial funds for their organisation or charity and many visitors enjoyed sandwiches, homemade cakes and savouries.

High Legh Sunday Teas have been taking place every year for about 40 years with a different organisation running a Teas each week and as well as being a popular event it is also an important way of raising funds.

Sadly, since Covid, the number of organisations taking part has reduced as they find it increasingly difficult to get volunteers. This year there were just 13

Sunday Teas compared to 26 in 2019.

The Community Association and groups that took part in Sunday Teas this year would like to continue in 2024 but we really need a few more groups to participate. You would be supported by the Community association, who will provide guidance, baking lists and hints and tips, to help you make your event successful.

“Do come along to this popular event and support the local charities and groups that are hosting the Teas.”

If you are interested in finding more about hosting a Sunday Teas then please contact Trish Adams, trishh1ca@gmail.com, 01925 755983, 07593 342615.





Explore the world with Mariner Travel



Can you hear that?
It's your dream getaway calling.
Don't ignore it.

sales@marinertravel.co.uk | 01925 759318 | www.marinertravel.co.uk
 @marinertravel  @marinertravellymm Call in! 40 Booth's Hill Rd, Lymm WA13 0DL



OUR SERVICES INCLUDE:
(BUT ARE NOT LIMITED TO)

EXTENSIONS	LOFT CONVERSIONS	NEW KITCHENS
BRICKWORK	RENOVATIONS	GENERAL REPAIRS
ROOFING	PLASTERING	LANDSCAPING
JOINERY	ELECTRICAL	FLOORING
PLUMBING	DRIVEWAYS	

07454 672 814

LIMETREEPROPERTYGROUP@GMAIL.COM






FREE NO
OBLIGATION
QUOTE





Trust your home to Molly Maid Cheshire & High Peak

Your local professional homecleaning service

Get in touch today to book your clean, please call:

Cheshire: **01565 889900** High Peak: **0161 331 9107**
or email: simone-berisford-ince@mollymaid.co.uk

www.mollymaid.co.uk
    MOLLYMAIDinUK





High Legh Preschool Nursery

The pictures aside are of the dads and friends who did amazingly to raise £3140 for the nursery school, by competing in the national three peaks challenge which took place on 8th and 9th September. They started by heading up to Ben Nevis then Scafell Pike and finally Snowdon to climb all three peaks within 24 hours.



The National 3 Peaks Challenge is a hike over the three highest mountains in Scotland, England and Wales, a tough 23-mile walk, including 3064m of ascent over the three mountains, and a 462-mile drive in between...all to be completed within 24 hours!



'We will take to the hills to raise money for High Legh charity Preschool Nursery' they said. The goal was to raise 5k which will go a long way towards the 30k that is needed to renovate the children's garden and play areas, allowing them to play out in all weathers. All the money raised from the challenge will buy one element to aid the Garden re-generation and we thanks and are proud of all those that took part!



Little Acorns Toddler Group

We meet every Tuesday from 9.30-11.30 in the St Johns Church Room. We have a range of activities including play time, crafts & singing. We are also famous for our tea & toast loved by the toddlers & the grown ups. We welcome people from the local community & wider afield to come along & join in the fun, all we ask is for a donation of £3 to cover our costs. We have been made aware that a very special person is popping in on December 12th at our end of term Christmas party I wonder who that will be? So come along & join us. See you there Elizabeth Whimpany



Abbey Leys Farm Shop



Fresh Farm Food at it's Best!

- Organic Free Range Eggs
- Rich Brown Welsummer, Speckled and White Leghorn Eggs
- Duck Eggs, Pickled Eggs

Home Grown Potatoes, Fresh Fruit and Vegetables, Preserves and Abbey Leys Honey.
Farm Bakery - Breads, Cakes, Sponges, Fruit Pies and Beef Pies.
Farmhouse Cheshire Cheese, Butter, Milk, Lemon Cheese and Farmhouse Ice Cream

Farm Shop Opening Times:
Monday to Friday 9.00am – 6.00pm
Saturday 9.00am – 5.00pm
Sunday 10.00am – 4.00pm

**Community Farmers Market
Opening Times:**
10.00am – 1.00pm

Tel: 07707028061 Email: janet@abbeyleys.co.uk

Peacock Lane, High Legh WA16 6NS

www.abbeyleys.co.uk



**HIMOS HUB ARTS SCHOOL
IS BASED AT THE HIGH LEGH
VILLAGE HALL**

We have various art and craft activities for adults and children every day of the week.

From Kids after school art clubs on Mondays, Tuesday and Wednesdays, to Sew Sew club on a Wednesday for all ages.

- **Private Party bookings available**

**CONTACT LIZ JONES AT LIZ@HIMOSHUB.COM
OR POP ALONG TO THE VILLAGE HALL TO
FIND OUT MORE.**



PLASTIC FREE HIGH LEGH

Plastic Free High Legh continues to grow as St John's Church has committed to being a partner and becoming an ally of the campaign.

The church will look at how it can reduce its use of single use plastics in its operation and encourage reduction of single use plastic in its messaging.

St John's is also working on its own Eco Church initiative which will further support reducing single use plastic from its community.

Alongside St John's we also welcome High Legh Primary School to the Plastic Free Community, with the school also committing to join the campaign.

The Plastic Free Community Leader Nigel Hennerley met with Mrs Tottle at the school to discuss how the school could get involved, and we very much look forward to working with our new allies going forward.

HIGH LEGH CLIMATE CHANGE & ENVIRONMENT WORKING GROUP

It has been a very eventful year for the working group, with the Hub 23 initiative, and lots of events over the year.

Renewable energy schemes for the home and insulation was discussed in our first event held at the Garden Centre, followed by growing your own food and herbs at Abbey Leys organic farmers market, Sunday Teas in the village hall, Litter Picks around High Legh, Himalayan Balsam picking along the golf course and Wrenshot Lane, and a Repair Cafe in September held in the village hall.

The High Legh Climate Change and Environment Working Group plays an important role in supporting Cheshire East to become carbon neutral and support the Borough Council's commitments to be carbon neutral borough wide by 2045.



I would like to welcome you to High Legh Bowling Club (HLBC). I hope that this article gives you a flavour of the range of activities that the club is involved in. The club is a thriving group and at the present time has over 150 members with something for everyone. HLBC is fortunate in that it has excellent facilities and most importantly, many people use this gem of a facility in High Legh. If you want more details, then see the information below.



League Bowling

The club fielded eight teams competing in six leagues, across the Knutsford, Trafford and Norley leagues with varying success. Highlights of the season include:

Knutsford Ladies' League narrowly missing promotion to division 1 lying third in division 2.

Norley League (A Team). Excellent season in this very competitive league. The team were placed 4th in division 2 (out of 7). A special well done to John Heald and Duncan Wright who were placed 5th and 6th respectively in the averages for this division.

Trafford League team continues to perform well in division 1 (out of 3) and put up a good fight to retain their presence in the topflight. We look forward to next season, with cautious optimism, for further progress in all teams.

Club Competitions

We have been able to complete our full programme of club competitions, 9 in all. Congratulations to all these members and many thanks to everyone who entered these competitions and to those who acted as scorers, provided refreshments, and supported the events in many ways.

Although there were many helpers on the day, one person deserving special mention is Chris Ashton who organised these events. His planning and organisation ensured that all the competitions ran smoothly.

The winners and runners up are as follows.

EVENT	WINNER(S)	RUNNER(S) UP
Men's pairs	David Andrew and Derek Jones	Allan Burdett and Norman Harrison
Ladies' pairs	Jackie Springall and Jean Mason	Trish Bulger and Joan Kitchen
Mixed pairs	Jean Mason and David Maynard	Carol Bond and Allan Burdett
Men's singles	Derek Jones	Allan Burdett
Ladies' singles	Christine Scott	Ann Maddox
Handicap	Ann Maddox	Debbie Conneely
Men's Plate	Bill O'Day	David Andrew
Ladie's Plate	Olwyn Brown	Ann Maddox
Handicap Plate	Bill O'Day	

Social Events

The club is holding its Presentation Evening on Friday, 3rd of November in High Legh Village Hall. This is a chance for us to acknowledge the achievements of the members listed above. We also arrange for a buffet meal, and, in addition, the evening will include a quiz.

Approximately 35 members, friends and family enjoyed a fun day at the clubhouse in September and we thank Pat and John Hurst for the effort they made in organising the food.

Bowling Away Day

A group of members took part in an away day in late July having been postponed earlier in the year due to the heavy rainfall. The weather on the rearranged day was dry but overcast early on then the Sun came out and we had a warm day's bowling. Although the green looked very dry it ran very well. The day's bowling was run on a round robin format with rotation of players in each round, an innovation that added to the enjoyment of the day. The morning session was followed by a sandwich platter and chips lunch and the afternoon session was followed by an evening meal. The overwhelming feedback from members was that this was a fun day out and the club is now looking to hold another away day in 2024 at a new venue. Thanks go to Jon Springall, our secretary, for coordinating the day.



Join us

As always, the invitation goes out to anyone who would like to take up crown green bowling to contact us. We can arrange introductory "lessons" for newcomers. If you require any information about the Club or want to arrange coaching, you can contact our President, Jack Stant on 07831121735 or by email at jack.stant@btinternet.com

Autumn Term at High Legh Primary School



We had another fantastic year in school last year and it seemed to have been non-stop with plenty of exciting activities, as well as lots of hard work going on in classrooms.

I was particularly thrilled with the attainment of Year 6 in their SATs tests, particularly in reading where we achieved 89% and the national figure was 73% as well as spelling, grammar and punctuation where we achieved 93% and the national figure was 72%.

Our year ended with a summer production of 'Grease' a specially adapted version for young children featuring all the hits, children were amazingly confident with many singing solos. It was a fun packed all singing, all dancing drama. It is a credit to our children and hard working staff who managed to stage such a wonderful performance.

At the end of last year our wonderful brass band were invited to Manchester to play at the Bridgewater Hall with The Halle, an amazing opportunity and experience for both children and staff. Currently our PTA are working hard to make money for our pond area which is looking very overgrown. They have already hosted a quiz and curry night which raised over £400 and the children have had fun at a Halloween Disco.

In September our Y6 children hosted a Macmillan Coffee morning, they baked cakes at home and served them on the day, thank you to all who came and donated. We made a huge £721.00 for Macmillan Nurses; I think that it is our biggest amount yet.

We currently have 150 children in school and I have taken much delight this half term with showing families around our school. Due to a fluctuating birth rate, both locally and nationally, we have class sizes varying from 15 to 32 children. Our school ethos is for children to have a childhood, for them to grow in confidence, have fun, learn and participate in society by being good citizens. Having the Lymm High School bus drop children off at our school is great, as it means we still see some of our old pupils, I was delighted when a large group of them came over to say hello and all of them agreed they wanted to come back to our school.

We continue to add to our curriculum to make it as exciting as possible. A legacy from the Olympic Games means that every school has a large amount of money to spend on sport each year. This means we can buy equipment, transport children to venues and competitions as well as hire a swimming pool for 2 weeks of the year to teach our children





to swim. This year we have added sailing to our list of sports that we offer. We have sent a class for a 6-week sailing course to Great Budworth Sailing Club. Every child has absolutely loved the opportunity, learning to capsize, sail and to race a boat. One week we had a beautiful sunny day without a breath of wind and the children learnt how to tie knots and each child got to drive the powerboat around the mere and learn how to reverse- a hard skill to learn.

Reading is at the heart of our curriculum; we feel that if a child can read then they will do well in every subject including maths. We want all our children to develop a love of books and stories and this year instead of celebrating World Book Day (which has become so commercialised) we are going to celebrate National Story telling Week, this is the end of January/ beginning of February. If you would like to come in as a guest story teller and read a book, or if you know of anyone who would like to support us during that week, please do get in touch. We have many parents who volunteer their time to listen to readers and a few local volunteers from the village who come in to support reading. If you would like to be a reading volunteer and can spare an hour a week, we would love to hear from you. I can honestly say working with children is an absolute delight and I am sure our volunteers get as much out of the session as the children do.

We celebrated harvest by donating flowers around our wonderful village, I hope you were lucky enough to receive a bunch. The children really enjoyed seeing the smile on the faces of the recipients and it was a lovely way to make us feel thankful for our food, plants and village that we are in. We continue to want to support our neighbourhood and our village High Legh, so if there is anything we can do as a school please let me know. Do not hesitate to pop in or get in touch. (01925 753713) or e-mail admin@highlegcheshire.sch.uk

If you would like a tour of our wonderful school please get in touch – I'm always delighted to show people round.

Louise Tottle Headteacher

ST. JOHN'S CHURCH

Sunday 1st October saw Harvest on the Farm

Where better to celebrate Harvest Festival than on a farm? St John's were delighted to be able to hold our Harvest Service at Abbey Leys Farm on 1st October as part of the monthly Farmers Market. Despite the very rainy weather, it was a joyful occasion where we were able to give thanks for all those local farmers and producers who all do their part to work sustainably to provide food for us. This is not an easy task and it was wonderful to be among them to celebrate what they do, give thanks for what they produce and for their work and to remind us all to support them and to shop locally as much as possible in order to do our part in treading lightly on our planet and helping to sustain it for future generations.



"We'd like to thank Janet and Tim Harrison for their wonderful hospitality in enabling us to celebrate harvest on their farm."

If you have been in church over the Harvest period you will have seen the Harvest banners. Last Christmas we also made 6 Christmas banners all depicting the story of the Nativity. We are planning to sew some banners for Easter. Does anyone fancy joining us? You don't need to be able to sew. We need people to help us put fabrics together & to help cut out, to help tack them together & to sew. What you get from it? Meeting up having with a goal to produce out next banners, but along with that is the friendship that grows we meet we sew we drink coffee we eat lunch we eat chocolate biscuits & most of all we have a great time together.

If you are interested please contact me on elizabeth.w1923@icloud.com



High Legh News CONTACTS

(National Grid) 0800 111 999
(United Utilities) 0345 672 3723
(SPEnergy) 105 or 0800 001 5400

Village Hall Manager **Helen Wright 07703 194052** or highlegvhall@gmail.com
 Newsletter articles and advertising **Gail Coenen** at gail.coenen@btinternet.com / **07557 678977**

Website **www.highleggh.org.uk**

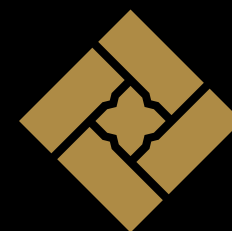
Send your email to **whatsoninhighleggh1@gmail.com** to receive monthly
 "What's on in High Legh" notifications.

Facebook **High Legh Community Association** Sunday Teas **Trish Adams 01925 755983**

Mrs Doreen Walker (Clerk) **01925 754818** or clerk@highlegghparishcouncil.gov.uk
 HL Primary School **01925 753713** or admin@highleggh.cheshire.sch.uk
 PTA Ruth Ande and Laura Boyd (Co-chairs) laura.boyd@carnellgroup.co.uk
 HL Pre School Nursery Manager, Ellis Starkey **01925 756061** or nursery.highleggh@gmail.com
 St John's Church Wardens. Tom Drury **07985 600122** Nick Whimpany **07554 343133** or highlegghstjohns@gmail.com
 Coffee and Friendship Doreen Walker **01925 754818** or doreenwalker@btinternet.com
 HL Community Observatory John Anderson www.highleggh-communityobservatory.com
 HL Women's Institute (President) Jenifer Morton **01565 8302947**
 HL Bowling Club Jean Mason **01925 753643** or email secretary@highlegghbowls.co.uk
 HL Park Golf Club **01565 830 888** or email info@highlegghpark.com
 HL Tennis Club (Head of Tennis) Emma Silcock **07985 605565** or emmasilcock@mail.com
 HL Community Transport **01925 755394 / 07876 161893** or jeromeevans@sky.com
 Cheshire East Council Cllr K. Parkinson **07565 158989** or kate.parkinson@cheshireeast.gov.uk

Appalachian Dance - Margaret **07508 329764** or cathj123@hotmail.com
 West Coast Swing Dance - Hazel hughzy_tigs@hotmail.com
 Baby Ballet - Joanne Chambers **07732 819984** or jeschoolofdancing@gmail.com
 Bridge Club - Joint chairmen, George Bradshaw **07837 254326** or George.bradshaw14@gmail.com
 Dave Smith **07702 520232** or dave@basementsystems.com
 Tai Chi contact via Trish Adams **01925 755983** or trishhlca@gmail.com
 Tango Classes - Simon simon.auty@icloud.com
 Pilates - Wendy **07900 953584** or wendy_ryan@hotmail.co.uk
 Balance Strength Core - Alison Roe **07866772123**

Information on this page about Emergencies, High Legh CA, Newsletter and Village Hall Users was checked at the time of publication, no responsibility can be taken for any errors or omissions.



PAH^{LTD}
EXTERNAL WORKS

With over 20 years of experience in the building trade, we provide workmanship for the domestic and commercial markets. In need of a new patio or paving installation, walls constructed or turf laying, or any other skilled external work? Look no further!

- **External Works Contractor**
- **Domestic and Commercial**
- **Block paving**
- **Turf Laying**
- **Walls Constructed**
- **Drainage**
- **Tarmac**

GET A FREE ESTIMATE!

In need of a patio driveway or other garden/business works?

M: 07956 680 219

E: Epahexternalworks@gmail.com

www.pahexternalworks.co.uk





High Legh Community Transport

Take the worry out of your transport arrangements
for your special occasion

- Transport to and from children's party venues
- Shuttle service to and from events held at the High Legh Village Hall
- Service available to support local events
- Shuttle service for your family and guests at weddings, parties etc.
- Transport to airports and UK holiday destinations
- Educational Activities
- Door-to-Dine Service

School service to and from Lymm High School, collection
from The Belfry, Rensherds Place and Park.

T: 01925 755394 M: 07876 161893
E: jeromeevans@sky.com