



High Legh Community Association

THE VILLAGE HALL . WEST LANE . HIGH LEGH . NR KNUTSFORD . CHESHIRE

NEWSLETTER

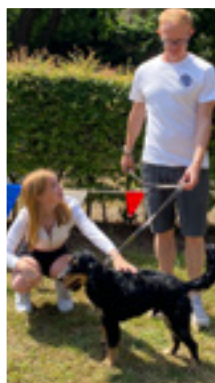
PUBLISHED BY HIGH LEGH COMMUNITY ASSOCIATION | DISTRIBUTED AT NO CHARGE TO HIGH LEGH RESIDENTS

Issue 159

WINTER
2022



SUMMER FAMILY DAY AND DOG SHOW



High Legh News

The Newsletter is published by the High Legh Community Association. It is written and distributed by High Legh residents.

Download from
www.highleggh.org.uk

For regular email notifications about High Legh events email
whatsoninhighleggh@gmail.com

If you want to publish an advert or have information about a local social event or news that might interest High Legh residents email Gail Coenen at:
gail.coenen@btinternet.com

**DEADLINE
for the
Spring
Newsletter
is
Friday 27th
January 2022**

Produced by Mustang Marketing Ltd
07823 550973
www.mustangmarketing.co.uk

© High Legh Community Association
2022
Registered Charity No 511391



Note from the Editor

This is the third newsletter I have edited, and I am really enjoying the experience.

I have to admit that juggling a full time job, family commitments, moving house and volunteering, is challenging, but I never regret offering to help out with Sunday teas over 20 years ago, which led to becoming a Parish Councillor, the Community Association Charity Trustee and organising 14 Village Shows.

In this edition there is a real plea for new volunteers to help keep the village hall open, and Sunday teas running by asking people to volunteer to join the community association. Please do pause and think if you could get involved. It's not as difficult as you may think, these roles can all flex around your other commitments and are really fulfilling. I have found life long best friends through my volunteering, and have had many hours of great fun, laughter and real sense of belonging.

“Go on - give Trish a call and become a High Legh Volunteer!”

Whilst the news of the Queen's death was not wholly unexpected, it nevertheless arrived as a national shock. There is a book of condolence at St John's Church for people to record their personal messages and feelings.

Gail Coenen - Editor
gail.coenen@btinternet.com
07557 678977

The opinions expressed are those of contributors, and not necessarily those of HLCA.

High Legh Community Association
The Village Hall, West Lane, High Legh, Nr Knutsford Cheshire WA6 6LR.



- KITCHENS
- BATHROOMS
- BEDROOMS
- HOME STUDIES

Over the past 35 years Marilyn has been harnessing her skills and resources to bring innovative and inspirational designs to her clients.

Her experience and that of her design team ranges from one-off pieces to whole house projects. Marilyn's unrivalled passion and ability to understand her clients' needs and aspirations is a breath of fresh air.



BESPOKE | LIFESTYLE | INNOVATIVE | INTERIORS

64 Telegraph Road, Heswall, Wirral CH60 0AG

T: 0151 342 2144/7 M: 07773 540888 E: merilyn@merilynphillips.co.uk



**Sheldons Dairy... Supporting the Local Community
in all weather, delivering fresh local milk and
produce to your door, since 1965. FREE DELIVERY**



Fresh Cheshire Whole Milk from Greenoaks Farm, Mobberley



Massey's Potatoes, Snelson



Abbey Leys Farm, High Legh



Bexton Cheese, Knutsford

Visit: sheldonsonline.co.uk
or call 01565 634509

SHELDONS 





KAY B
— BEAUTY —



07939 204 137



Kaybbeauty@mail.com



@Kayburnsbeauty

HIGHLY EXPERIENCED
BEAUTY THERAPIST
BASED IN HIGH LEGH

TREATMENTS INCLUDE:

- DERMALOGICA AND
NON SURGICAL
TREATMENT FACIALS

- SEMI PERMANENT
EYEBROW TATTOOING

- SHELLAC NAILS

- WAXING

- OTHER TREATMENTS AVAILABLE

Fully Qualified & Insured
Work Safe Certified



High Legh Community Association NEWS & EVENTS



**You are invited to attend on Sunday 27th November
2.30pm at the High Legh Village Hall**



High Legh Community association is a Registered Charity which is managed by the Community Association Council.

The Community Association Council manages the charity to:

- **Maintain & run the Village Hall**
- **Promote and organises leisure activities**
- **Communicate via the Website, Newsletter & What's On**

At the AGM we will show you what events and activities the Community Association Council have been doing over the last year.

“Come along and have your say and enjoy a cup of tea.”

HIGH LEGH VILLAGE HALL

High Legh has a thriving Village Hall that has been serving the community for over 40 years.

Tai Chi



Baby Ballet



Indoor Bowls



Dance Classes



Bridge Club



Parties



Sunday Teas



Social Events



Balance & Stretch



Coffee & Friendship



Pilates



Kids Craft Classes



Meetings



Flower Arranging



The Hall is a huge asset to the Village and has been maintained and refurbished to a high standard. It hosts many classes, events, meetings, exhibitions and is available for private hire.

The amenities include a modern kitchen, a large Hall and the Mike Walker meeting room.



The Village Hall is run by the High Legh Community Association Council
HLCA needs help to secure the future of the Village Hall

High Legh Community Association Council

- **Runs & manages the Village Hall**
- **Communicates with Residents via the Newsletter, What's On emails & Website**
- **Raises funds for the Village Hall & the Community**
- **Organises Social events**

Why do we need help?

The answer is simple –

- **The number of members on the committee has dwindled over the last few years and we have not managed recruit replacements.**
- **Several long serving members of the committee would like to retire.**

What do we need help with?

- **Managing small maintenance & improvement projects at the Hall.**
- **Keeping the books and managing the budgets.**
- **Help to keep our Policies up to date (eg Safeguarding).**
- **Help with our Social Events and Sunday Teas.**
- **Assistance with our Website and Newsletter.**

Would you like to help?

This is a great opportunity to join the CA team and be part of something that is such a big benefit to the community.

For information or to chat to one of the team then contact

Trish Adams - trishhlca@gmail.com / 01925 755983

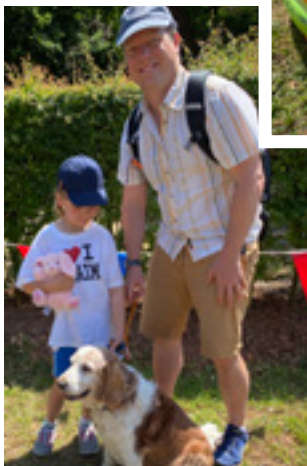
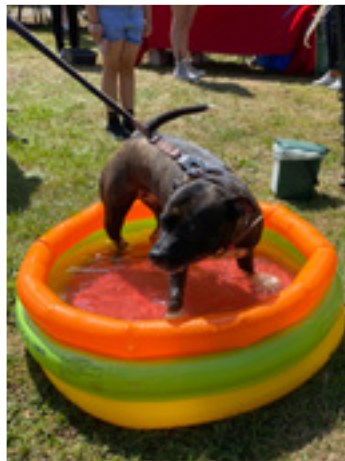
Kath Jones - cakath@yahoo.com / 01925 753052

Su Carter - highleghcatreasurer@gmail.com / 01925 758594

**YOUR HELP CAN SECURE
THE FUTURE OF THE VILLAGE HALL**

High Legh Family Fun Day & Dog Show

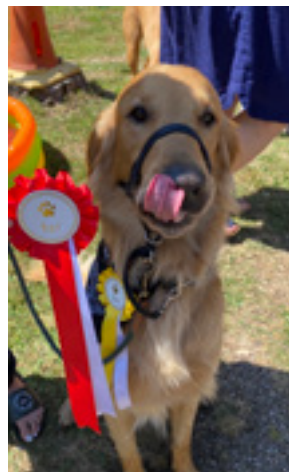
One wonderfully hot day in July saw High Legh's second family fun day and dog show. And what an event it was too! With paddling pools to keep the pooches cool, ice creams, cakes, and many other stalls, there was loads to do.



Thanks to Nic Keeley and Lou Allen for there tremendous hard work organising it, Look out for next years -

**DON'T
MISS IT.
ITS FAB!**

Enjoy the pictures here and at page 16.



CHRISTMAS FARMERS MARKET

**A CHANCE TO DO SOME LAST MINUTE
CHRISTMAS SHOPPING**

LOTS OF CHRISTMAS GOODIES

**MEATS, VEGGIES, BREAD AND CAKES
HANDMADE LOCAL CRAFTS AND GIFTS**

SUNDAY 18th DECEMBER 10.00AM - 2.00PM

**HIGH LEGH VILLAGE HALL
DRINKS & SNACKS FOR SALE**

mustang
m a r k e t i n g

Increase your sales with a
wide range of point of sale
marketing products.

- Luxury Brochures
- Product Folders
- Hanging Boards
- Sample Pieces
- Video Brochures

For further information
please contact **01925 754766**
or visit **mustangdigital.co.uk**





High Legh Robert Moffat Memorial 10k

“Sunday 12th March, 2023 at the earlier time of 10.30am.”

We are really pleased to announce that entries are now open for the thirteenth running of your favourite 10k race at the earlier time of 10.30am on Sunday March 12th 2023. See www.highlegh10k.org.uk.

Those who entered the race previously should already have been notified but for those of you who have never done it, or those who haven't done it for a while, or if you just want to celebrate life after the Covid-19 lockdowns then make this your year. You can aim just to get round it or set a personal best if you like! The choice is yours.

If you don't want to/cannot run, a wonderful aspect of the race's success over the years is the volunteers, especially the Marshals who make such a difference with their friendliness and making sure that the runners are safe. If you would like to be a Marshal then please contact Dave Kirby (Marshals Coordinator) via the website or email dave.kirby10k@gmail.com. Thanks!

Please note also that there will be the usual road closures around the school (on Wrenshot Lane from 8.00am – 12.30pm) – although there will be access for residents to Rensherds Place and Wrenshot Lane, and a short closure on Pheasant Walk up to North Drive just before and after the start of the race at 10.30am.

So, you now have several options:

- **Start or continue your training** ● **Register for the event**
- **Become a Marshal**



And whatever you decide, we look forward to welcoming you at High Legh Primary School on Sunday 12th March at 10.30am.

Nick Gerrard, Chair of the Race Committee on behalf of the High Legh Community Association and Lymm Runners

Email: raceadmin@highlegh10k.org.uk

THE ULTIMATE COMBAT GAME

BATTLEFIELD LIVE Knutsford

step out of the game and into the battlezone. Unleash the Marine in you

No pain
No paint
No bruises
just adrenaline
fuelled fun

BOOKINGS: 07779248622 Email: bookings@battlefieldliveknutsford.co.uk
www.battlefieldliveknutsford.co.uk

CLIMATE AND ENVIRONMENT WORKING GROUP

As you may be aware, in May 2019, Cheshire East Council declared an environment and climate emergency and set a strategy to be carbon neutral by 2025 and to encourage all businesses, residents and organisations in Cheshire East to reduce their carbon footprint by reducing energy consumptions and promoting healthy lifestyles.

In September 2019 High Legh Parish Council declared their support and agreed to engage with the community to suggest ways of reducing our carbon impact. In this article we look at home energy sources. With the price of gas, oil and electricity rising, now's a good time to consider sources of renewable, low carbon domestic energy.

SOLAR PANELS

Over the past decade solar panels have become more effective and cheaper - generating clean, emission-free electricity to power a home all-year-round. You may have seen residents installing them already across High Legh.

“Compared to current electricity prices, it now takes on average 4 years to pay off a solar system through savings on energy bills.*”

Surplus energy can be sold to the national grid and home batteries can be installed (typically in loft space) to allow energy

to be stored and used during night time hours. Panels have a long life span of more than 25 years which makes them a good long-term investment, with continued energy savings which increase the market value of a property. Aesthetically pleasing solar panels are also available – they are completely black, allowing them to blend in with roof tiles.



*<https://inews.co.uk/news/home-solar-panels-pay-themselves-four-years-energy-bills-1796274>

HEAT PUMPS

Heat pumps offer **an energy-efficient alternative to boilers and air conditioners**. Like a refrigerator, heat pumps use electricity to transfer heat from a cool space to a warm space, making the cool space cooler and the warm space warmer. During winter, heat pumps move heat from the cool outdoors into a home.



During summer, heat pumps move heat from a home into the outdoors. Since they transfer heat rather than generate heat,

“heat pumps are a renewable energy source that can efficiently provide comfortable home temperatures.”

There are three main types of heat pumps: air-to-air, water source, and geothermal. They collect heat from the air, water, or ground outside a home and concentrate it for use inside.

The most common type of heat pump is the air-source heat pump, which transfers heat between a home and the outside air. It can **reduce carbon emissions by up to 60%** and **heating bills by up to 65%** over a >25 year life span. Government grants are available for air source and ground source heat pump installations (£5k and £6k respectively).

OTHER ENERGY SAVING OPTIONS

It's worthwhile considering upgrading underfloor, wall and loft insulation, for example using icynene spray foam insulation. Thermal curtains are a simple measure that can help reduce heat loss from windows and doors during winter and keep rooms cool in summer, with the added benefit of noise reduction.

As part of its new **Environment Hub**, the **High Legh Climate and Environment working group** are organising a free talk in January 2023 on '**Renewable Energy in the Home**'. More details can be found on page 26.



LOOKING BACK OVER SCHOOL YEAR 2021/22



The PTA is very grateful to everyone in the school and our local community who has helped and supported us.

During 2021/22 the PTA raised an amazing £13,449 – Thank you! It wouldn't have been possible to achieve this without you! The green chart shows how we raised this money The blue chart shows how the children of High Legh Primary have benefitted from funds raised in 2021-22.

We finished paying the PTA contribution of £20,000 towards our Multi Use Games Area (MUGA). In addition, every child received a Christmas present, Easter Egg and Panto snack bag. The year 5 and 6 children received brass band funding and as ever, the year 6 children received funds towards their leaver's party and book.

The PTA wishes to once again thank the Community Association for the grant that funded our clean air monitor. The PTA team installed the monitor in time for Clean Air Day and the Air Monitor gives real time air quality information for the air at school.

One aim of the monitor is to help us all take steps towards cleaner air, for example, not leaving your car

engine running when stationary, making short journeys (1 mile or less) on foot or by bike.

Anyone can access the air monitoring information:
<https://tinyurl.com/HLPrimaryAirmonitor>

A NEW YEAR, A NEW PTA

With the start of a new school year we have a new PTA committee. With the current cost-of-living crisis the new PTA is particularly looking for ways that we can support our school and its families. If you have any suggestions or would like to volunteer we would love to hear from you.



LOOKING FORWARD...

Right now, the PTA is looking forward to our Autumn Disco on 3rd November, hosting a number of pre-loved clothes sales and PTA information events. Also, our Christmas Fair will take place on Friday 2nd December. The fair is always a wonderful family event with a range of stalls, mulled wine and a tombola.

One request is for gifts for our tombola, perhaps you can contribute a gift from your business or an item for our luxury food or drink hampers. We appreciate all the High Legh community joining in and being involved, whether it's by supporting us with gifts, buying tombola tickets or coming along on the day. We look forward to seeing you there on Friday 2nd December – and thank you in advance for your support!

Best wishes on behalf of the PTA, Laura & Ruth Co chairs
email team@highleghpta.org



MEET THE PTA 2022/23



CO CHAIR - LAURA



MUM TO
HARRISON
IN CLASS 4

CO CHAIR - RUTH



MUM TO
DARA IN
CLASS 4

SECRETARY - NICOLA



MUM TO
EDWARD IN
CLASS 2

TREASURER - ELISE



MUM TO
EVE IN
CLASS 1

COMMS OFFICER - EMMA

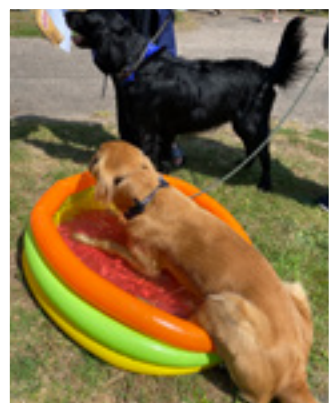
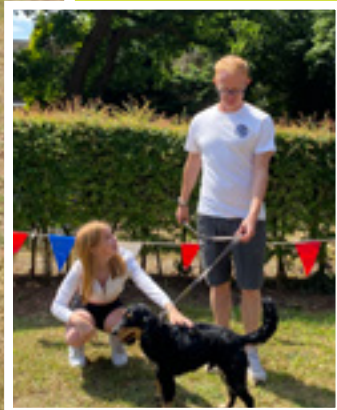


MUM TO
OLIVER IN
CLASS 4 &
JOSHUA IN
CLASS 1

If you fancy helping or have any fundraising ideas please get in touch...

TEAM@HIGHLEGHPTA.ORG

High Legh Family Fun Day & Dog Show





YOUR COMMUNITY ASSOCIATION COUNCIL MEMBERS ARE:-

TRISH ADAMS – Joint Chair
JANET HARRISON – Joint Chair

SU CARTER – Treasurer

KATH JONES – Secretary

NIC KEELEY & LOUSE ALLAN

– Social Events Organisers

MARILYN RIDLER

– Church representative

**CLR TIM HARRISON &
CLR JUDIE MORTON**

– Parish Council representatives.

The Charity Trustees are Trish Adams,
Su Carter, Janet Harrison & Kath Jones.

**Contact Kath for all CA matters
on cakath@yahoo.com**

TONY CRAIG

(WARRINGTON)

PAINTING & DECORATING COMPLETE ROOM TRANSFORMATION

- GENERAL HANDYMAN
- PAINTING & DECORATING
- PLASTERING SERVICES
- JOINERY WORK
- HARDWOOD/ LAMINATE FLOORING
- 35 YEARS EXPERIENCE
- NEW SKIRTING BOARDS & COVING
- NEW HARDWOOD OR LAMINATE FLOORING
- ROOMS RE-PLASTERED IF REQUIRED
- FEATURE WALLS CREATED

T: 07776 785 557

E: TONY.CRAIG1957@OUTLOOK.COM

Your Gardening Man



- Lawns and borders
- Edges and hedges
- Patios, drives and gutters
- Garden makeovers

Call Colin on 07470 427884 for all your garden maintenance needs.



HIGH LEGH PODIATRY

Georgina Pierce BSc DPodM MChS
HCPC Registered Chiropodist / Podiatrist

- + General Footcare
- + Gait Analysis
- + Ingrowing Toe Nails
- + Diabetic Foot Assessments
- + Verruca

HOME VISITING SERVICE FOR ALL OF YOUR FOOTCARE NEEDS

Telephone **07845678918**
Email **podiatry.gina@gmail.com**

to arrange an appointment



Weaver Vale Art Exhibition at High Legh Village Hall on 6th August 2022



The Weaver Vale Art Society [WVAS] was formed over 10 years ago and comprises today of 20 professional, semi-professional and amateur artists who shared a common interest in furthering the development of art across Cheshire through meetings and exhibitions. They meet every week to paint at the Parish Rooms in Acton Bridge. New members are always welcome.

The exhibition at High Legh Village Hall attracted around 120 members of the public who were able to view a wide range of paintings as well as prints and greetings cards. Light refreshments were also available throughout the day.

There was an opportunity for visitors to vote for their favourite painting and the one with the most votes received 'The People's Choice Award'. Phil Bower from the Northwich Art Shop was on hand to select his favourite and for this the chosen art work received 'The Phil Bower Award'. About 10 of our artists were available on the day to chat with those attending and all items were available to purchase.

All in all the day was considered a success and WVAS would like to return probably for a weekend exhibition in the future and our thanks go out to the Village Hall committee members who helped to give us the opportunity to show our work.

Graham Watson - WVAS



David**BLAKE**

Stream

Cleaning Services

- We clean windows, gutters, solar panels, conservatories, patios and drives using traditional methods and "Waterford pole cleaning systems"
- Clear moss from roofs • Wasp nest removal

M: 07710 969 327

15 Oakfield Avenue, Knutsford WA16 8JB.



Fully Insured

High Legh Educational Trust

Newcomers to the village may be interested to know a little about the High Legh Educational Trust. Its origins date back as far as 1799 but in 1981 it became known as The High Legh Educational Trust after receiving a donation of £15,000 from Charles, the late Lord Grey after he donated the proceeds from the sale of the old school building, now the Village Hall. This sum was reinvested by the Educational Trust and the income generated is disbursed by the Trustees to local projects which meet the Trust's broad educational objectives. Over the past 4 decades, grants totalling £50,891 have been allocated to many worthwhile causes within High Legh.



Money is granted for educational purposes to benefit local children and young people. High Legh Primary School and our Pre-School Nursery have often requested and received donations for specific projects over the years, but allocations are made to individuals and groups too. The Trustees are frequently heartened to receive recipients' letters of thanks making it clear that even modest sums can make a real difference. High Legh Educational Trust hopes to continue to be able to respond to well-argued applications for funds which will help and encourage young people from the village in years to come.

It is appropriate here to place on the record the community's gratitude to Charles, the late Lord Grey, for his characteristic generosity. He chaired the committee with his legendary good humour, wisdom and infectious enthusiasm and is still greatly missed. His son Richard, Lord Grey of Codnor followed as Chairman and we are grateful for his keen interest in faithfully continuing his Father's initiative with the same attentive dedication.

Michael Hindley Secretary.

If you are interested in applying to for an educational grant, you can contact the Trust by emailing mike_cyn@hotmail.co.uk or writing to: M H Hindley Apartment 6, Eagle Lodge, 19 Harrop Road, Hale, Cheshire WA15 9DA.

COFFEE AND FRIENDSHIP



Coffee and Friendship is a monthly get together for High Legh residents, run totally by volunteers. All residents are welcome to come along and enjoy a cup of tea/coffee and homemade cake, meet new people and catch up with old friends and neighbours.

On 22 September we raised £250.30 for Macmillan Cancer Care including some donations I received later. Thank you to all who donated.

The next coffee morning will be on 24 November 10.30 – 12.00 at the Village Hall. On 15 December we will have our usual Christmas lunch. Please book with Doreen or Trish.

Can't believe we've been doing this for 6 years in December! Thanks to High Legh Community Association for helping towards the funding of these events and to all the volunteers who bake and help. We couldn't do it without you.

For more information contact Trish Adams on 01925 755983,
email: trishhlca@gmail.com or Doreen Walker on 01925 754818,
email: doreenwalker@btinternet.com.

ORCHARD SERVICE STATION LTD



**OAK TREE GARAGE
WARRINGTON ROAD
HIGH LEGH WA16 0RT
(NEXT TO THE BEARS PAW)**

- **SERVICING**
- **BATTERY**
- **TYRES**
- **MOT**
- **EXHAUSTS**
- **BRAKES**

TEL: 01925 755516

ROAD SAFETY

Please keep your hedges and shrubs trimmed to keep pavements clear so they are safe to walk on.

Following our request to CE Highways to improve the West Lane/Peacock Lane junction, this work has now been carried out along with white lining along West Lane. We are still waiting for the zigzags outside the School to be repainted. Our Ward Councillor, Kate Parkinson has a small sum of money to

spend on High Legh Ward (8 parishes) and we are awaiting quotes from Highways so we can decide which projects can be funded.

You can report any Highways problems, fly-tipping and streetlights out on [fixmystreet.cheshireeast.gov.uk](https://www.fixmystreet.cheshireeast.gov.uk)



PLAY AREA

Two new pieces of equipment and a picnic table have been installed and two new benches will be installed to replace the old ones.



NEW WEBSITE COMING SOON

HS2

The Parish Council have sent a petition on the Hybrid Bill and may be called to Select Committee to put forward our suggested changes. The key areas are the spur junctions which the PC think should not be built before the Northern Powerhouse Rail route is approved and the impact on local roads



QUEEN'S GREEN CANOPY



A tree will be planted in High Legh, location to be decided.

The surplus from the Jubilee event was donated to St John's Church.

A letter of condolence was sent to the Private Secretary to His Majesty the King from the Parish Council and the residents of High Legh. The Book of Condolence will be kept at St John's Church.

POLICE



PCSO Emma Darroch is now training to be a police officer so we have a new PCSO Chloe Shore.

**Next PC meetings:
Monday 5th December at 7.30pm.**

If you would like to subscribe to our email updates, please email the clerk

Mrs Doreen Walker (Clerk)
Tel: 01925 754818

Email: clerk@highlegghparishcouncil.gov.uk
www.highlegghparishcouncil.gov.uk



Moggy n Mutt

- Dog Walking
- Dog Sitting
- Cat Visits
- Small Pet Care
- House Sitting

Call Donna: 01925 752173
Pet Care Services www.moggynmutt.co.uk

BLAKESLANDSCAPES

Installing **NEW** or re-laying existing patios
 Decking • Block paving • Fencing
 Turfing & Planting • Artificial grass

RICKY BLAKE 07790 603522

rickyblake02@gmail.com

LOCAL ELECTRICIAN

NICEIC Registered

Over 25 years in business

From a fuse in a house, rewire
 No Job to small

Please ring Ben Entwistle

07763 400405

MAN and VAN

- Careful, Considerate Man with Large Van
- Courier Service - Full or Part Load
- White Goods, Motor Bikes, Furniture
- Full or Part House Clearance
- Licensed for Rubbish Removal

Phone Tom Ford

07747 415330

TONY CRAIG

(WARRINGTON)

PAINTING & DECORATING
 COMPLETE ROOM TRANSFORMATION

TEL: 07776 785 557

E: TONY.CRAIG1957@OUTLOOK.COM

REGULAR EVENTS AT ST. JOHN'S CHURCH

- We're Hooked Crochet **every Monday at 2pm** in the church room
- Little Acorns group for pre-schoolers and parents/carers **every Tuesday 9.30am-12noon**, Church Room
- Mothers Union **1st Tuesday each month at 2.30** in the church room.
- Coffee, chat and create **every 2nd Tuesday 2pm** in the church room.

NOVEMBER

Friday 11th - 7.30pm

Cheese and Wine evening - High Legh Village Hall

Saturday 26th 2-4pm

Afternoon Tea with talk by The Blood Bikes Charity

- St Johns Church room

Thursday 24th 10:30am - 12:00

Coffee and Friendship - High Legh Village Hall

Sunday 27th 2:30pm

Community Association AGM - all welcome. - High Legh Village Hall

DECEMBER

Friday 2nd High legth Primary School Christmas Fair

Friday 2nd - Sunday 4th - 11am - 5pm Christmas Tree Festival

Sunday 4th - 12pm - 4.00pm

Christmas tree festival and advent carols - St Johns Church

Monday 5th - 7.30pm

Parish Council Meeting - High Legh Village Hall

Wednesday 7th

Dedication of Christmas Banners - St Johns Church

Saturday 10th - 2.00pm - 4.00pm

Interior and Exterior Decorator

DAVID S HOUGHTON

*Plumbing, joinery and property repairs
 also undertaken*

Tel: 0161 865 5865 Mob: 07803 007236

daveshoughton@gmail.com



Lime Tree Flowers

Fresh Flower Workshop

at the High Legh Village Hall

3rd Friday of every month

11-1pm & 7-9pm

m: 07842057377



[/limetreeflowerscheshire](https://www.facebook.com/limetreeflowerscheshire)

VOLUNTEER TO JOIN THE COMMUNITY ASSOCIATION

contact Trish Adams
on 01925 755983
or trishhlca@gmail.com

GARY PERCIVAL

Tel: 01925 419009
Mob: 07970 252 001

garypercivaldecorators@gmail.com



PAINTER & DECORATOR

Christmas Sewing event with Jo - High Legh Village Hall

Sunday 18th - 10.00am - 2.00pm

Community Christmas Farmers Market - High Legh Village Hall

Saturday 24th Christmas Eve - 4.00pm

Christingle Service - St. John's Church

Saturday 24th Christmas Eve - 6.30pm

Nine Lessons & Carols - St. John's Church

Sunday 25th Christmas Day - 10.00am

Christmas Day Service - St. John's Church

JANUARY 2023

Wednesday 18th - 12.30pm

Community Lunch - High Legh Village Hall

Friday 27th

Guinuary Friday Evening - St Johns church room** provisional date

MARCH

Sunday 12th - 10.30am

High Legh Robert Moffat Memorial 10k



HIGH LEGH PODIATRY

Home visiting service for
all of your footwear needs

Georgina Pierce BSc DPdM MChS

HCPC Registered
Chiropodist / Podiatrist

T:07845 678918

E: podiatry.gina@gmail.com

N|WORTH CONTRACTING

- Septic tank emptying
- Paddock maintenance
- Flail hedge cutting
- Flail grass cutting

Contact Neil on

07973242808

www.nworthcontracting.co.uk

Fitted Kitchens, Bedrooms, Studies, Fitted Lounge Furniture

ALL NEW PALE COLOURS
IN SOFT TOUCH VINYL
SOLID NATURAL OAK
HI GLOSS, STAINLESS STEEL

MARK TAYLOR
07966 421195

Let me know your events
for February onwards for
the next edition
gail.coenen@btinternet.com

Donna L. Lowe M.Ch.S

State Registered Chiropodist

Surgery: 17, Ashley Rd, Altrincham, WA14 2DT

Telephone

0161 928 5033

HOME VISITS BY APPOINTMENT

ORCHARD SERVICE STATION

SERVICING & REPAIRS

MOT TESTING

EXHAUSTS FITTED FREE

WARRINGTON ROAD

By the Bears Paw

Tel: 01925 755516

HIGHLEGH 23
ENVIRONMENT HUB

A NEW YEAR'S RESOLUTION?



Supported by the High Legh Climate and Environment working group we invite you to be part of a 2023 village initiative to help **reduce High Legh's carbon footprint.**

- Receive monthly tips throughout 2023 suggesting how you can reduce your carbon footprint and save money!
- Be invited to 4 free talks*/workshops with practical advice on how you can make changes.
- Take part in a village wide carbon survey to help measure our carbon impact.

Please sign up and be part of the HighLegh23 Environment Hub by sending your name and email address to:

HighLegh23EnvironmentHub@gmail.com

*Our first free talk, "**Renewable Energy in the Home**" takes place at, and by the kind permission of, the High Legh Garden Centre on Thursday 26th JANUARY 2023 at 7pm.

Individual small changes can add up to significant collective change. Social science studies have estimated that a critical % of people, approx. 25%, need to change their mindset and lifestyles to tackle climate change. Once this % is reached it can lead to a rapid acceleration of change across society. This is promising news. Changing habits and learning can also be very rewarding in terms of quality of life and health benefits. **Join us on this journey of discovery, education and action!**



Plastic Free High Legh – Sunday Teas

On Sunday 4th September Plastic Free High Legh held our Sunday Teas fundraiser for the charity Surfers Against Sewage who organise the Plastic Free Communities initiative.



It was very well attended by the whole community and serviced by our volunteers who had baked and created a great range of cakes and sandwiches which were much enjoyed.

We held an information desk where we engaged with customers in how to reduce our reliance of single use plastics, and engaged in many conversations.

We were also supported by “The Refill Round” who refill your containers with their marvellous products and cleaning materials, saving many plastic bottles. And also “Tropic” a local business specialising in environmental beauty products.

The event was a great success and raised a massive £635 for the charity.

“Many thanks to all came and supported us, and also to all those who helped to bake and organise a special day.”



HIGH LEGH CROWN GREEN BOWLING CLUB

September saw the end of league bowling, outdoors, and I am pleased to report that all our nine league teams successfully completed their fixtures.

For what must be a first, several fixtures had to be postponed due to the high temperatures experienced during the record-breaking heat wave of this Summer. Several of the leagues judged that it was just unsafe to risk the health of bowlers in the intense heat. Otherwise, the green itself has played well during the season but now there are some issues, in some areas of the green, which require attention. Despite this, the green will be kept open, as last year, over the winter to allow members, who wish to, to continue outdoor bowling weather permitting.

League Bowling

As noted above, we had nine teams competing in six leagues with varying success.

Highlights of the season include:

Knutsford Ladies' League narrowly missing promotion to division 1 lying third in division 2. Well done to Ann Maddox who was top of the averages for the division and to Yvonne Fairbrother who was 4th.

Knutsford Men's' League maintaining a top 6 position in division 3 (out of 5). Congratulations to Chris Ashton who was top of the averages in this division. Norley League (A Team). Excellent season in this very competitive league.

The team were placed 4th in division 2 (out of 7). Once again well done to Chris Ashton who was placed 7th in the averages for this division. Trafford League team continues to perform well in division 1 (out of 3) and put up a good fight to retain their presence in the topflight.

We look forward to next season, with cautious optimism, for further progress in all teams.

The club has got a solid membership base of approximately 150. There are many new members joining the club virtually week by week. Most of these new members have joined league teams and have contributed significantly to the success of these teams.



Club Competitions

We have been able to complete our full programme of club competitions, 9 in all.

The winners and runners up are as follows.

EVENT	WINNER(S)	RUNNER(S) UP
Men's pairs	Norman Harrison and Jack Stant	Allan Burdett and Derek Jones
Ladies' pairs	Debbie Conneely and Jean Mason	Debbie Conneely and Jean Mason
Mixed pairs	Allan Rawnsley and Jean Mason	David Maynard and Gill Ashton
Men's singles	Chris Ashton	Derek Jones
Ladies' singles	Chris Scott	Jean Mason
Handicap	David Maynard	Liz Woloschin
Non - finalist	Jean Priestner	Jackie Springall
Team Competition	Jean Priestner and John Hirst (Veterans A Team)	Yvonne Fairbrother and Allan Burdett (Friday A Team)
Arthur Jackson Trophy	Alan Eddie	John Heald

Congratulations to all these members and many thanks to everyone who entered these competitions and to those who acted as scorers, provided refreshments, and supported the events in many ways.

Although there were many helpers on the day, one person deserving special mention is Chris Ashton who organised these events. His planning and organisation ensured that all the competitions ran smoothly. He even had time to get on the green to win the Men's Singles.



Fresh local flowers for every occasion
delivered to your door

Free delivery within a 5 mile radius

Spring, Summer & Christmas Workshops
in my Flower Barn at Aston by Budworth

VERY POPULAR



Ring me on 07970927161 or landline 01565777262
for more information or pop in (ring before you come just in case I'm out delivering)



Winners of the singles competitions: Chris Ashton, Chris Scott, David Maynard.



Crowd on Finals Day.

Bowling Away Day

The club has, in the past, organised away days but obviously not for the last few years. Thanks go to Jon Springall, our secretary, for co-ordinating the day. He has submitted the following report on the day.

"The club held an away day at the Zetland Hotel, Southport on Saturday 23rd July with 26 participants attending. The weather was dry but overcast early on then the Sun came out and we had a warm day's bowling. Although the green looked very dry it ran very well. The day's bowling was run on a round robin format with rotation of players in each round, an innovation that added to the enjoyment of the day.



Members of High Legh Bowling Club on Away Day.

The competition was determined by the individual scores of players and the competition was eventually won by Chris Ashton to whom thanks are due for organising the bowling competition. The morning session was followed by a sandwich platter and chips lunch and the afternoon session was followed by an evening meal with a good choice of dishes to choose from. The overwhelming feedback from members was that this was a fun day out and the club is now looking to hold another away day in 2023 at a new venue."

Social Events

The club is holding its Presentation Evening on Friday, 25th of November in This is a chance for us to acknowledge the achievements of the members listed above. As well as a buffet meal, the evening will include a quiz.

Social and Indoor Bowling

Over the summer the club has hosted a U3A group from Lymm and Thelwall. We had 10 players most of whom had not played before, Tuition was given and over the summer they all reached a good standard. On the last session we had a round robin competition which was won by Steve Foster.

The social bowling has been well attended over the summer, but the hot weather and lack of rain made the green very fast.. The winter indoor bowling will start in October on Mondays and Wednesdays (information from Jack Stant). All are welcome.



Indoor bowling in High Legh Village Hall

Join us

As always, the invitation goes out to anyone who would like to take up crown green bowling to contact us. We can arrange introductory "lessons" for newcomers.

Contact our President, Jack Stant on **07831121735** or by email at **jack.stant@btinternet.com**

Individual Tuition For English Language and Literature at Secondary Level



Baffled by Shakespeare? Confused by synonyms, antonyms and those troublesome apostrophes?

Perhaps I can help? As a qualified and experienced teacher of English up to A level, I offer expert, sympathetic, and occasionally fun, tuition both face-to-face and online, in and around High Legh and Lymm.

And did you know, one hour of one-to-one tutoring is equivalent to almost three hours of classroom time?

If you would like more information, please visit my website:

www.chrissieknight-tuition.co.uk

**Email me on chrissieknight@icloud.com
Or call: 07740 437037**

THE LATEST FROM ST. JOHN'S CHURCH

We are very pleased to tell you that an appointment has been made for a new vicar at St. John's High Legh. This is, as advertised, a part time post of 2.5 days a week, plus Sundays. Our new incumbent, Clare Leal, is moving to join us from Oxfordshire.

Clare will be licensed by Bishop Mark at St. John's on Monday 5th December at 7pm. If anyone wishes to attend, please could they email highleggstjohns@gmail.com by Friday 25th November so that we can confirm numbers.

As a church, we have been praying that God would help us to see a way forward and that someone would feel called to be part of our High Legh community. We are truly grateful that Clare has heard God's call. We hope that, as a community, you will join us in welcoming Clare to High Legh.

Following hosting the community Platinum Jubilee celebrations on the church car park in July, it was with great sadness that we marked the death of Her Majesty The Queen at the beginning of September. The church flag was flown at half-mast for the period of mourning and a Book of Condolence was available to be signed in church. Many thanks to all those who volunteered in order that St John's was open during the period of mourning, providing a place for people to sit and reflect.



Our Harvest celebration took place on Sunday 2nd October and we were able to support the Hope Centre in Partington, a community hub providing support and services to local people, by donating much needed goods to stock their shelves. As a church we have been supporting them for the last year or so. You can find out more about this local charity at www.hopecentrepartington.com.

We are also delighted that, through an initiative with the Rocha UK Project targeted across church denominations, St. John's has now been awarded Bronze Eco Church status. We are already part of the village Climate and Environment Working Group and we have been invited to be one of the five Plastic Free Allies in our village. We are now working to secure a Silver Award as we continue to strive to care for God's creation.



Views are being sought by the Diocese of Chester about the vision for the future. The grassroots consultation aims to "cast the net wide" in order to capture the views of the widest number of people in our communities and our churches to determine that vision. Dates for events in our area will be announced shortly and we will pass these on to the High Legh community.

Even if you are not a regular church goer, please do consider sharing your views. Many in our congregation enjoyed a trip out to Chester Cathedral on Saturday 8th October to be part of the licensing service for new Readers and Pastoral Workers. Despite the closure of the M56 westbound, it was a joyous occasion to support our new Reader, Karen Drury, who grew up in High Legh, as she was licensed to our parish here at St. John's. She joins Chris Stanisstreet, Reader, and Stewart Jackson, Pastoral Worker, on our ministry team.

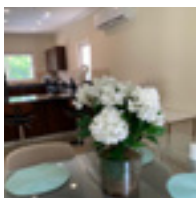
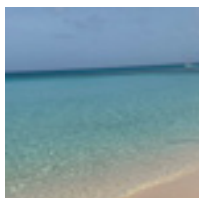
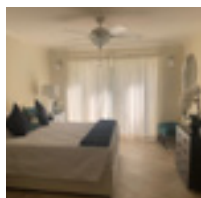


Looking ahead to Advent and Christmas, we hope that many in the community will come and enjoy our Christmas services, with our Christingle and Crib Blessing Service on Christmas Eve at 4pm, with the traditional Nine Lessons and Carols at 6.30pm. There will be a Family Holy Communion Service at 10am on Christmas Day. Prior to that, our Christmas Tree Festival returns from Friday 2nd – Sunday 4th December.

More details available on our website, www.highlegchstjohns.org.

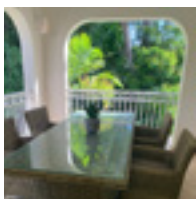
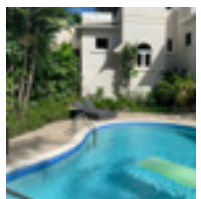
FABULOUS BARBADOS RENTAL

2 BEDROOM APARTMENT TO RENT ON THE WEST COAST OF BARBADOS



Reasonably priced luxury villa in a small gated community available to rent with shared pool, fully fitted with all equipment necessary to enjoy your stay.

2 minutes walk from secluded beach and 5 minutes walk from Mullins.



**For enquiries Call or email Liz on 07905 741 969
elizabeth.w1923@icloud.com**

High Legh Community Association

NEWS & EVENTS



WOULD YOU LIKE TO HELP?

The Community Association Committee is run by a small numbers of dedicated volunteers and we are all getting older! We would love to have some help with baking and serving at the Community Association Sunday Teas, whether that be practicing your baking skills, helping with the washing up or serving. We are also looking for committee members, someone to help with the development of the website, and to manage social media, or to help organise social events.

If you are interested please contact Trish Adams on **01925 755983** or **trishhlca@gmail.com**

Our Community Association Council members are :-

Trish Adams – Joint Chair,

Janet Harrison - Joint Chair

Su Carter – Treasurer

Kath Jones - Secretary

Nic Keeley & Louse Allan – Social Event Lead Organisers

Marilyn Ridler – Church Representative

Clr Tim Harrison & Clr Judie Morton – Parish Council representatives.

The Charity Trustees are

Trish Adams, Su Carter, Janet Harrison and Kath Jones.



The Moon Image by John Anderson

Did the Universe begin with a Big Bang 13.8 billion years ago or is it in steady state – universal and everlasting? These were the questions prompted by a talk by Mark Holmes in an excellent presentation on the life and work of Dr Halton Arp in August. This provoked considerable discussion both on the night and subsequently online.

Further interesting talks are planned for the rest of this year. So do come along to the Church Room on the second Thursday of the month, admission £4.

We have had some clear Friday nights recently, enabling us to open the observatory. We open at 8:30 or dusk whichever is later. The summer triangle is on display and the beautiful M13 star cluster and, a particular favourite, Alberio a double star, as well as other objects. Later in the evening Saturn, with its characteristic rings, comes into view.

The observatory is located at Abbey Leys Farm, and is open to all in the community of any age – no annual fee or subscription (donations welcome). We open at dusk on Friday nights if the sky is clear. We are also open for the Abbey Leys Farmers Market on the first Sunday of each month.

As we get into autumn and winter, both Jupiter and Saturn will be visible in the southern sky. Both are bright and easily visible with binoculars. To find your way around the night sky download Stellarium. It is a free piece of software for tablets or laptops - www.stellarium.org. When set up for your location it will show you what is visible in the night sky.

John Anderson 01925 75 5570

www.highleghcommunityobservatory.com



High Legh Preschool Nursery

As usual here at nursery we have had lots of things going on over the last few months.

In the summer we held a BBQ and festival for all of our families and this also included a Graduation Ceremony for our school leavers. We had 20 children leaving us to move onto reception and we celebrated and had lots of fun at this event.

We held some themed days during the school holidays to enhance our curriculum and to build on the recent interests of the children, these included a Space themed days, Science day and Sports Day. These were really popular and we hope to be able to do these on a regular basis.

With the start of the new academic year and new term in September we welcomed lots of new starters and they have all settled in brilliantly over the last few weeks.

Due to having increased occupancy we are looking to recruit some new staff to join the team here so if you are interested please drop us a line for any further information.

JOIN THE TEAM

We are recruiting

Due to increased occupancy we have more hours available, both full & part time considered 😊 get in touch we would love to hear from you.

All email enquiries to:
nursery.highlegh@gmail.com
or manager.highlegh@gmail.com



As we are now into the autumn the children have been taking part in lots of seasonal activities such as collecting leaves in all of the beautiful autumn colours and doing leaf paintings and they have been on a treasure hunt for conkers. We also have Halloween inspired events as the children have visited Lymm Pumpkin Patch and we will be holding a spooky spectacular Halloween Party.

Thanks to Geoff from High Legh Community Transport for taking the children in the minibus to see the pumpkins and also to Lymm Pumpkin Patch for letting the children visit, they had a great time.

Looking ahead then to December and the run up to Christmas we will be holding our traditional Christmas Performance at the Village Hall on Thursday 8th December. This is always a lovely celebration where

the children sing a selection of popular Christmas Carols and perform some specially prepared dances. Our dance teacher, Miss Joanne, from Joanne Elaine School Of Dance, is always invaluable in helping the children learn these dances. Then we have an exciting visit from the man himself when Father Christmas makes an appearance to give the children selection boxes. Our parents and families love to attend and we serve refreshments and hold a raffle.

Jennifer Nicholls Nursery Administrator
Tel No: 01925 756061 / 07801 566218



High Legh External Cleaning

Window cleaning service

ALL DOORS, FRAMES AND SILLS CLEANED ON EVERY VISIT

- Windows
- Gutter clearing
- Soffits/fascias
- Conservatory roof cleans



Please call Gareth on **01925 879355 / 07305 839434**
or email **highleggh.property@gmail.com**
www.highlegghclean.co.uk



Community Association Sunday Teas helpers Gail, Gwen, Su, Pam, Julie, Jean, Doreen, Anita, Walter & Jen.

High Legh Sunday Teas 2022



After no Sunday Teas for 2 years it is a pleasure to say that Sunday Teas this year have been a success. Many regulars were back and said how much they had missed us!

This year we held 18 Sunday Teas running from the 1st of May until 11th September. Sunday Teas have undoubtedly changed and looking back to the 2015 season there were 27 Sunday Teas that ran from Easter to the middle of October but looking forward to 2023 there still seems to be a willingness from Organisers to continue to participate. Sunday Teas are an important fund raiser for all the local groups and charities that take part ,so please do support them.

We welcomed three new groups, The Parkinson's Charity, Helen Margaret Owen Foundation and Plastic Free High Legh and they all had a successful day raising money for their causes.

However, although we had a successful season, many groups found it difficult to get volunteers and bakers. This is the reason that Oughtrington Bowlers have sadly said they will not be able to take part next year and they thanked the Community Association for running the very successful Sunday Teas that they were able to profitably participate in.



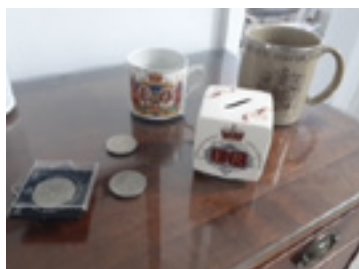
Would you like to help? - The Community Association Committee is run by a small numbers of dedicated volunteers and we are all getting older! We would love to have some help with the organising and running of Sunday Teas.

If you are interested in helping with this then please contact Trish Adams on 01925 755983 or trishhlca@gmail.com



Items left...

These items were kindly loaned for the Jubilee event in June for the history display. If they belong to you or someone you know, please call Julie on **07932638439** and I will return them to you. I will dispose of them in a month if not claimed.
Thank you. Julie



MISK - HIGH LEGHS' SKATING STAR

You may have seen articles in the newsletter before about Misk, a High Legh resident, whose ice skating talent is going from strength to strength. Misk trains at Planet Ice in Altrincham, where she learnt to skate at the end of 2018 and unbelievably she competed in her first world competition in 2019, in Fasano, Italy where she came second place!

“It has been another successful year where Misk has made her team, Coach, friends and family so proud.”



Now Misk has moved up to Division 3 in the juniors and recently competed at the WIFSA (World In-line Figure Skating Association) World Championship on Friday the 8th, placing 3rd in Dance. It was tough and competitive and such a fantastic achievement. Her Coach Donna McCarthy, head coach in Altrincham Planet Ice, says she is very proud of what Misk has achieved over the past few years, and looks forward to the years to come.

Misk's passion towards skating is growing due to her incredible coach Donna McCarthy and team. "My skating family are my strength and have helped grow my determination and passion to skating. I am very grateful for being part of such an incredible and supportive team and I am proud to represent GB and Planet Ice."

Misk says: *"Donna is my main inspiration, we train and skate on ice and off ice which makes it fun and gives me more opportunities to be involved in. It also means I have two great sports that are an asset for my future. Most importantly is how my team has become my family as we grow, learn and thrive through various*



challenges together. I have learnt that whilst “Together” is a small word, it has a much bigger meaning!”

I look forward to building my passion and skills and aim to continue my exciting journey but if it wasn't for the teamwork, it wouldn't be the same.”

“Congratulations Misk - from all in High Legh! You make us proud.”

Abbey Leys Farm Shop



Fresh Farm Food at it's Best!

- Organic Free Range Eggs
- Rich Brown Welsummer, Speckledy and White Leghorn Eggs
- Duck Eggs, Pickled Eggs

Home Grown Potatoes, Fresh Fruit and Vegetables, Preserves and Abbey Leys Honey.

Farm Bakery - Breads, Cakes, Sponges, Fruit Pies and Beef Pies.

Farmhouse Cheshire Cheese, Butter, Milk, Lemon Cheese and Farmhouse Ice Cream

Farm Shop Opening Times:

Monday to Friday 9.00am – 6.00pm
Saturday 9.00am – 5.00pm
Sunday 10.00am – 4.00pm

Community Farmers Market

Opening Times:
10.00am – 1.00pm

Tel: 07707028061 Email: janet@abbeyleys.co.uk

Peacock Lane, High Legh WA16 6NS

www.abbeyleys.co.uk



Lymm Runners

Club Number 7663040

Lymm Runners keep their cool to tackle 31-mile Cheshire Stately Homes Ultramarathon



What's the best way to visit four of Cheshire's most iconic stately homes in one day? Well, if you're a Lymm Runner you run between them all, clocking up 31 miles as you go. This was for a new race for club members only - the Cheshire Stately Homes Ultramarathon, conceived by Kieran Walshe, a seasoned ultrarunner and one of the club's founders.

The race started at 7am from Lymm Library and entrants went on a circular route on lanes and footpaths to Walton Hall, Arley Hall, Tatton Park and Dunham Massey Hall before finishing back in Lymm. It all happened on one of the hottest days of the year so far –

“with temperatures that day reaching 28C.”

Twenty-one solo runners took part plus eight teams of either two or three, all supported by volunteers, who provided food, drink and ice lollies at the checkpoints. Runners also enjoyed a cooling hose-down, courtesy of one inventive volunteer who was waiting for them en-route.





First solo male runner to finish was Sam Stephens in a remarkable 4 hours 30 minutes, while first solo female was Fae Garland in 5 hours 39 minutes. The first team to finish was a trio of Jack Pilkington, Phil Rowen and Mark Bainton in an impressive 4 hours 16 minutes.

Kieran Walshe commented *'It was a lovely day out running in beautiful Cheshire countryside, even if it was a bit hot! Thanks go to all the volunteers who helped out, and especially to Alice Mulhall who designed a classic Tshirt for runners!'*

After the race, many runners and their families enjoyed the annual Lymm Runners summer party at the Tennis Club where they exchanged anecdotes and speculated about whether this ultramarathon might become a regular fixture in the running calendar.

The Club has more than 350 members and actively encourages High Legh residents to join. Each year they partner with the High Legh Community Association to organise one of the best small 10K races through High Legh Village.

For more information visit www.lymrunners.org.uk



CLIMATE AND ENVIRONMENT

PLASTIC FREE HIGH LEGH

High Legh Community Litter Pick was completed on Sunday 31st July 2022

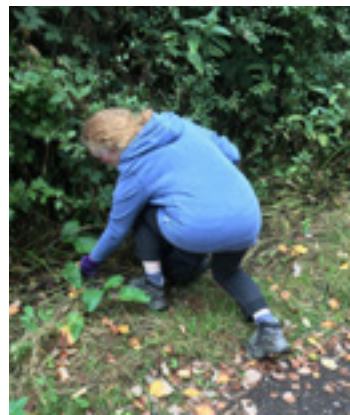


Many thanks for those taking part, we had four routes in all and collected a good haul of litter from around the whole village, and the A50. Cheshire East BC were informed and arranged to collect from all locations. A well earned cup of tea was enjoyed at the Village Hall Sunday Teas afterwards.

It doesn't stop there of course! Calling all walkers, ramblers and dog walkers, please be on the look out for rubbish inconsiderately discarded in the village! If you would like to organise, or be part of, the next little pick, please contact Cllr Nigel Hennesley at nigelharbingers@live.co.uk



“Better in the bin than in the hedge!”



High Legh News CONTACTS

(National Grid) 0800 111 999
(United Utilities) 0345 672 3723
(SPEnergy) 105 or 0800 001 5400

Village Hall Manager **Helen Wright 07703 194052** or highlegvhall@gmail.com
Newsletter articles and advertising **Gail Coenen** at gail.coenen@btinternet.com / **07557 678977**

Website **www.highleggh.org.uk**

Send your email to **whatsoninhighleggh@gmail.com** to receive monthly
"What's on in High Legh" notifications.

Facebook **High Legh Community Association** Sunday Teas **Trish Adams 01925 755983**

Mrs Doreen Walker (Clerk) **01925 754818** or clerk@highlegghparishcouncil.gov.uk
HL Primary School **01925 753713** or admin@highleggh.cheshire.sch.uk
PTA Emma Openshaw **07867 831946** & Rebecca Booth **07884 028094** (Co-chairs) or
team@highlegghpta.org
HL Pre School Nursery Manager, Ellis Starkey **01925 756061** or nursery.highleggh@gmail.com
St John's Church Wardens. Tom Drury **07985 600122** Nick Whimpany **07554 343133** or
highleggstjohns@gmail.com
Coffee and Friendship Doreen Walker **01925 754818** or doreenwalker@btinternet.com
HL Community Observatory John Anderson **www.highleggh-communityobservatory.com**
HL Women's Institute (President) Patricia Jones **07713 937197**
HL Bowling Club Jean Mason **01925 753643** or email secretary@highlegghbowls.co.uk
HL Park Golf Club **01565 830 888** or email info@highlegghpark.com
HL Tennis Club (Head of Tennis) Emma Silcock **07985 605565** or emmasilcock@mail.com
HL Community Transport **01925 755394 / 07876 161893** or jeromeevans@sky.com
Cheshire East Council Cllr K. Parkinson **07565 158989** or kate.parkinson@cheshireeast.gov.uk

Appalachian Dance - Margaret **07508 329764** or cathj123@hotmail.com
West Coast Swing Dance - Hazel hughzy_tigs@hotmail.com
Baby Ballet - Joanne Chambers **07732 819984** or jeschoolofdancing@gmail.com
Bridge Club - Joint chairmen, George Bradshaw **07837 254326** or George.bradshaw14@gmail.com
Dave Smith **07702 520232** or dave@basementsystems.com
Tai Chi contact via Trish Adams **01925 755983** or trishica@gmail.com
Tango Classes - Simon simon.auty@icloud.com
Pilates - Wendy **07900 953584** or wendy_ryan@hotmail.co.uk
Balance Strength Core - Alison Roe **07866772123**

Information on this page about Emergencies, High Legh CA, Newsletter and Village Hall Users was checked at the time of publication, no responsibility can be taken for any errors or omissions.



The High Legh Community Association and Lymm Runners are proud to announce

the 13th Robert Moffat Memorial 10K Race 2023

**Described as
'One of the best Running Events in the UK'
by The Guardian.**

**And certainly one of the friendliest.
Entries are now open.**

For more information go to:

www.highleggh10K.org.uk



SUNDAY LUNCH *AT HIGH LEGH*

EVERY SUNDAY SERVED 12 - 4PM



FROM
£13.95

BOOK NOW



01565 830888



reception@highleghpark.com



@highleghparkgc



High Legh Community Transport

Take the worry out of your transport arrangements
for your special occasion

- Transport to and from children's party venues
- Shuttle service to and from events held at the High Legh Village Hall
- Service available to support local events
- Shuttle service for your family and guests at weddings, parties etc.
- Transport to airports and UK holiday destinations
- Educational Activities
- Door-to-Dine Service

School service to and from Lymm High School, collection
from The Belfry, Rensherds Place and Park.

T: 01925 755394 M: 07876 161893
E: jeromeevans@sky.com